



**DANPAL®**  
LIGHT ARCHITECTURE  
SOLUTIONS FOR THE  
BUILDING ENVELOPE



**DANPAL®**

**LIGHT ARCHITECTURE SOLUTIONS  
FOR THE BUILDING ENVELOPE -  
OFFERING UNIQUE VISUAL EFFECTS  
AND OPTIMAL THERMAL COMFORT**

Danpal® create exceptional light architectural systems for building envelopes. Perfect for facades, cladding, roofing, skylights and shading applications, Danpal® makes it easy to design natural daylight environments. A truly global company - with over 30 years' experience providing unique solutions to architects - Danpal® have supported a multitude of renowned architectural projects. We offer customers a complete system of innovative, premium quality and customised solutions that can be supplied ready-to-install.

# CONTENTS

## 1. DANPAL® VERTICAL SOLUTIONS



FACADES

CONTROLITE® FAÇADE

Intelligent Daylighting Solution 16

DANPATHERM FAÇADE

Double Glazed High Insulation Solution 18



CLADDING

DANPAL® FRAMED FAÇADE

Single Glazed Framed Solution 20

DANPAL® SEAMLESS FAÇADE

Single Glazed Large Span Solution 22

DANPAL® VRS CLADDING

Ventilated Rainscreen Solution 26

## 2. DANPAL® ROOFING SOLUTIONS



ROOFING

CONTROLITE® ROOFING

Intelligent Daylighting Solution 30

DANPAL® COMPACT ROOFING

High Impact Transparent Solution 32



SKYLIGHTS

DANPAL® FREESPAN ROOFING

Rafter Glazing Solution 34

DANPAL® SEAMLESS ROOFING

Seamless Glazing Solution 36

DANPAL® SOLARSPACE ROOFING

Frameless Glazing Solution 38

DANPAL® TRADITIONAL ROOFING

Modular Glazing Solution 40

SPACETRUSSE

Large Span Solution 42

DANPAVAULT

Vaulted Skylight Solution 46

## 3. DANPAL® SHADING SOLUTIONS



SHADING

DANPAL® LOUVRE

Operable Louvre Solution 50

## 4. DANPAL® INTERIOR SOLUTIONS



INTERIOR  
SOLUTIONS

DANPAL® INTERIOR  
AND DECORATION

Decorative Partitions and Ceilings 54





# THE ARCHITECTURE OF LIGHT



Zénith, Limoges, France  
Danpal® Single Glazing Facade System  
Architect: Bernard Tschumi Architecte



Danpal® offers a brilliant range of daylight harnessing architectural solutions designed for building envelopes. When you choose Danpal®, you choose light-transmitting architectural panelling systems with unmatched diversity and creative potential. Our customised and easy-to-install range of systems literally transform light – whether natural or artificial – into a powerful and versatile tool, for architectural creations that radiate inside and out.

Danpal® specialises in architectural innovation. For over 30 years, Danpal® has been a world leader in utilising the qualities of the sun for the benefit of architecture.

**We Call It Light Architecture.**



# THE OPTIMAL BALANCE OF SOLAR AND THERMAL PERFORMANCE





## NATURAL LIGHT & WELLBEING

Natural lighting in structures is proven to be beneficial on many levels. Sunlight makes us happier and more relaxed and enables us to feel the time change during the day. It saves energy and enables us to view objects with greater clarity. It's no surprise architects are moving towards greater use of natural lighting that penetrates structures throughout the day. As people spend almost 90% of their time indoors, it is vital to create a comfortable solar and thermal environment for overall wellbeing.

## PROVIDING GREATER COMFORT THROUGH VISUAL AND THERMAL EQUILIBRIUM

When it comes to architectural lighting, finding the equilibrium is key. Excess light results in undesired glare and intolerable ambient heat. Danpal® uses materials with superior flexibility, transparency, tonal qualities and insulating properties. Danpal® systems assure balanced thermal comfort, while their translucency ensures optimal visual comfort and even light diffusion.

Keystone House, Montreuil, France  
Danpal® Single Glazing Facade System  
Architect: M. Paillard

Elsa Enterprise Academy, Liverpool, UK  
Danpal® Single Facade System  
Architect: BDP Manchester









# TRANSFORMING ANY STRUCTURE INTO A WORK OF ART

Architects are constantly seeking innovative solutions and raw materials to create the extraordinary. Since our establishment, Danpal's state-of-the-art systems have given architects the creative freedom to experiment with daylight in ever more experimental and inventive ways. Our extensive range of colours, textures and reflections, offers architects a rich palette for creating inspired structures that illuminate the user's experience – indoors and out, at any time of day.

Expo Shanghai 2010, China  
Danpal® Single Glazing Facade System  
Architect: Jacques Ferrier



ALWAYS  
LIGHT YEARS  
AHEAD







## THE FIRST COMPANY TO DEVELOP THE TRANSLUCENT PANEL STANDING SEAM SYSTEM

A visionary in architectural technologies, Danpal® was the first company to develop the Danpalon® translucent panel standing seam system. We create unique daylight solutions for all types of building envelopes. For over three decades, Danpal's® systems have been used around the world in architectural projects spanning commercial, education, transport, health, sports and high-tech industries.

Danpal® solutions require minimal maintenance and offer excellent control of energy consumption, resulting in substantial life cycle cost savings. Danpal's ready-to-install systems help reduce on-site labour time, particularly in open environments or problematic conditions. A global leader in the design and manufacture of daylight systems with high thermal insulation properties and mechanical resistance, Danpal® enables architects to harness natural resources in an environmentally responsible and cost-effective manner.

Left: NAPA Fashion House, Korea  
Danpal® Single Glazing Facade System, 16mm  
Architect: Mark Fran/de plus

Top: Studio Offices, Korea  
Danpal® Single Glazing Facade System, 16mm  
Architect: Mark Fran/de plus



# IN HARMONY WITH THE ENVIRONMENT

- **Solutions which limit energy consumption:** Our systems can adapt to variable climatic conditions for sensible management of available light.
- **Adapted to the HQE approach**, which has defined building certification. HQE targets both the interior of the building, i.e. the health and comfort of users, as well as integration into the environment, saving resources and reducing waste.
- **Partnerships with the ADEME** (Agency for Economic Development and Energy Control) and the CNRS (National Centre for Scientific Research) using precise measurements created in test cells to validate the thermal performance of the Danpatherm system.

Sports Complex, Epernon, France  
Danpal® Single Glazing Facade System, Printed  
Architect: Ligne 7 Architecture





- **Manufactured according to ISO 9001 and ISO 14001.**
- **Simplified maintenance** through high pressure cleaning with fresh water, with minimal soap or detergent required.
- **Recycling of off-cuts and packaging:** Danpal® panels and waste are 100% recyclable. 100% of our production off-cuts are regranulated by extrusion.
- **Low on-site fabrication and handling:** In 95% of cases we deliver systems that are manufactured to size (i.e. minimizing waste by eliminating off-cuts on site).
- **Non pollutant:** The Danpalon® system is certified as a non-pollutant and is suitable for use in sensitive fields such as the Agri-food sector.



# DANPAL® SMART SIMULATION SOFTWARE

## PREDICT THERMAL AND SOLAR PROPERTIES OF ANY STRUCTURE

Well-designed buildings offer as much natural daylight as possible while still maintaining a comfortable internal environment. Danpal® provides the right tools for planning the most effective light openings – by integrating appropriate products, which exploit the optimal level of energy resources – anywhere in the world, any time of day.

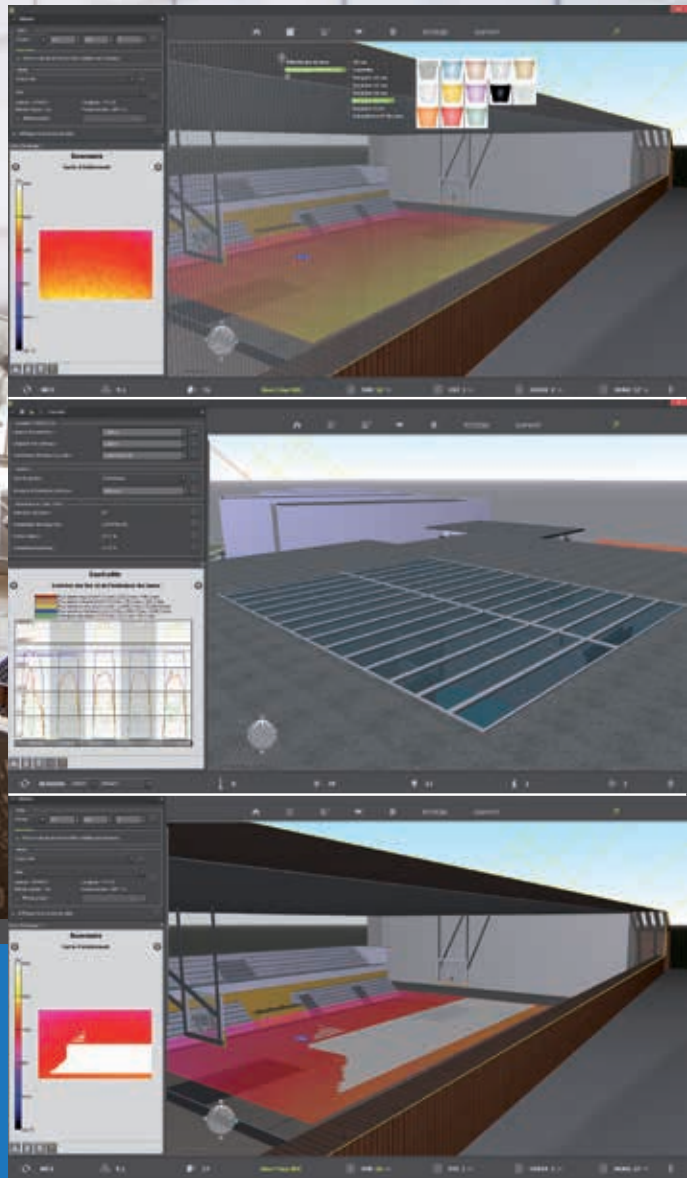
By using state-of-the-art software, Danpal® provides lighting and solar energy simulations. Danpal® is unique in offering simulation solutions – reflecting its 30 year heritage as a specialist in daylight architectural innovation.

## OPTIMAL PLANNING OF LIGHT ARCHITECTURE AND ENERGY USE

Danpal® products are built into the simulation software. Architects can monitor internal heat and light levels during preliminary design by testing the diffusing and insulating capacity of various Danpal® solutions. This ensures optimal energy efficiency and visual comfort.

Burnie Makers Workshop  
Burnie, Tasmania  
Architect: Terroir Architects





Burnie Makers Workshop  
Burnie, Tasmania  
Architect: Terroir Architects

## CHOOSE THE PERFECT SYSTEM FOR YOUR ENERGY AND LIGHTING NEEDS

Danpal® simulations bring solar and energy efficiency to new levels and create flexibility in design. The simulation software enables architects to choose the perfect system design for their energy and lighting needs by "playing" with different product specification options and the structure area.

Taking into account the system's physical characteristics (light transmission, solar factor, U value, etc.), the software creates a simulation of daylight and energy consumption, then provides a map showing the natural illuminance levels throughout the building.







# FACADE SOLUTIONS

Danpal's translucent systems enable simple,  
quick and effective installation of facades.  
They are considered world leaders in their field.

CONTROLITE® FAÇADE

DANPATHERM FAÇADE

DANPAL® FRAMED FAÇADE

DANPAL® SEAMLESS FAÇADE



# CONTROLITE® FACADE

## INTELLIGENT DAYLIGHTING SYSTEM

### Light Optimisation for Facades

Transform your facade into a dynamic wall of light. Controlite® features rotating louvres that adjust their position throughout the day to transmit the optimal amount of daylight. This intelligent system balances light levels and solar heat gain to transmit uniformly diffused light, creating comfortable indoor environments in even the harshest climates. Controlite® offers a dynamic, cost-effective solution which significantly lowers energy consumption and integrates sustainable design.

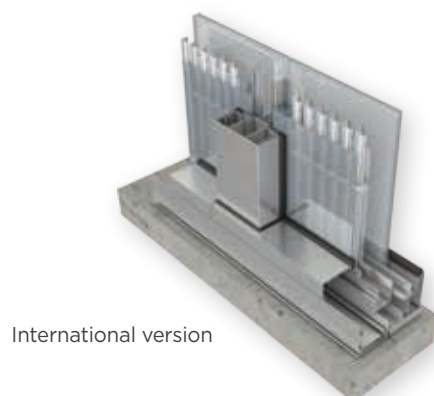
Gym La Grange au Bois, France  
Controlite® Facade System  
Architect: Gremillet





## SYSTEM BENEFITS

- High thermal insulation
- No visible aluminium connections on the outside
- Expansion of the polycarbonate
- Low maintenance



International version



# DANPATHERM FACADE

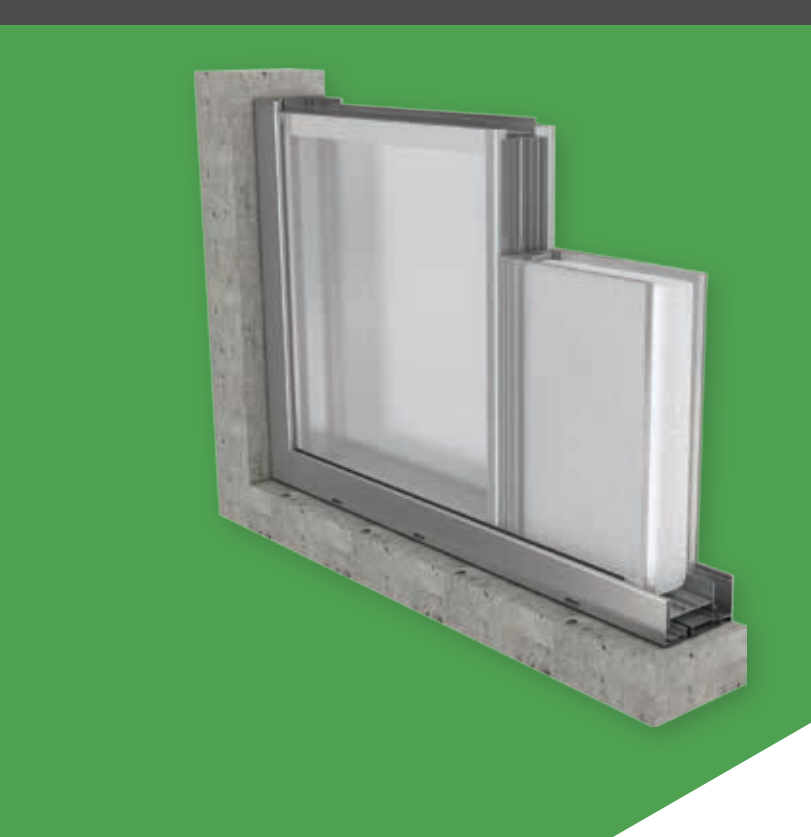
## COMPOSITE HIGH INSULATION SYSTEM

### Light & Insulation

Danpatherm is a unique, factory assembled building system designed to achieve high thermal performance and good light transmission with superb spanning capabilities. It is quick and easy to install, reducing labour costs and construction times. Danpatherm can be integrated with a complete LED lighting system, creating a radiant wall during the day and a light box at night.

Saint Thomas Church, Vaulx-en-Velin, France  
Danpatherm Facade System  
Architect: [Siz'-ix]





Sir Charles Gairdner Hospital | Perth, WA | GHD

### SYSTEM BENEFITS

- Extensive panel colour and finish options to choose from
- Variable levels of light transmission available
- No visible framing internally or externally
- Factory pre-fabricated cassette system
- LED lighting available upon request
- Exceptional thermal insulation
- Quick and easy installation
- Excellent load resistance



# DANPAL® FRAMED FACADE

## SINGLE GLAZED FRAMED SOLUTION

### The Freedom to Create Inspired Facades

Danpal® Façade is a translucent system which integrates Danpalon® panels with glazing profiles and finishes. Designed to be installed on various types of structure envelopes, Danpal® Façade offers a multitude of benefits. It is lightweight and provides excellent resistance to impact and weather. It also offers UV protection, superior air and water tightness, high security and comfortable light diffusion. Our extensive range of colours, textures, finishes, reflections, and lighting offer architects a rich palette to create inspired facades - illuminating the user's experience with sunlight by day, then offering spectacular light walls radiating internal light in the evenings.

Chisholm College, Melbourne, Australia  
Danpal® Single Façade System  
Architect: Cox Architects and Planners





## SYSTEM BENEFITS

- High impact resistance
- UV protection
- Comfortable light diffusion
- Lightweight
- Freedom of design
- Superior air and water tightness
- Highly secure
- Certified system
- Easy installation
- Made with Microcell technology



# DANPAL® SEAMLESS FACADE

## SINGLE GLAZED LARGE SPAN SOLUTION

Danpal's range of structural framing options allows Danpalon multicell panels to span large distances vertically. Requiring steel framework, the Seamless Façade system provides a spectacularly clean visual appearance with comfortable diffused daylight. The unique aluminium framing system allows concealed joints externally while ensuring the system is 100% watertight at all times.





(top right) SEW Eurodrive | Welshpool, WA | Hames Sharley  
(bottom right) MITA WA | Joondalup, WA | Meyer Shircore

## SYSTEM BENEFITS

- Flush external wall finish
- 100% waterproof with patented frame
- Easy-to-install self-supporting system
- Compatible with Controlite® system





# CLADDING SOLUTIONS

The Danpal® cladding system provides exceptionally light, visually attractive and waterproof protection with superior insulation.

- DANPAL® VRS SYSTEM





# DANPAL® VRS

## VENTILATED RAINSCREEN SYSTEM

### **An Appealing Exterior with Insulating Efficiency**

The principle of Danpal® VRS is to provide a full system incorporating the trusted Danpalon® panel that will fully protect the insulation. Based on natural ventilation by means of an air gap, the convective motion behind the panels keeps the insulation dry and maintains its efficiency over time.



## SYSTEM BENEFITS

- Lightweight
- 100% waterproof
- Quick, easy and cost effective installation
- Unparalleled design & choice of colours
- Significant panel lengths (up to 12.0m standard lengths, longer upon request)
- Environmentally friendly
- No waste



International Student Residence, Reims, France  
 Danpal® VRS  
 Architect: Jean-Michel Jacquet







# ROOFING SOLUTIONS

Danpal's skylight systems allow you to explore new possibilities for designing buildings filled with light – with control of light intensity and energy consumption together with flexible installation.

CONTROLITE® ROOFING

DANPAL® COMPACT ROOFING

DANPAL® FREESPAN ROOFING

DANPAL® SEAMLESS ROOFING

DANPAL® SOLARSPACE ROOFING

DANPAL® TRADITIONAL ROOFING

SPACETRUSSE



# CONTROLITE® ROOFING

## INTELLIGENT DAYLIGHT SYSTEM

### Light Optimisation for Roofing

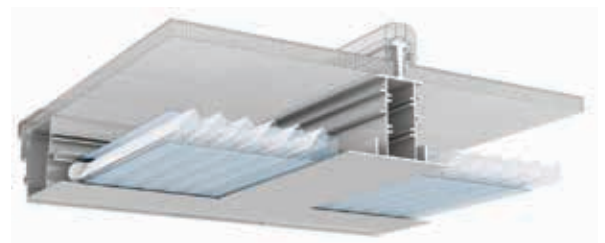
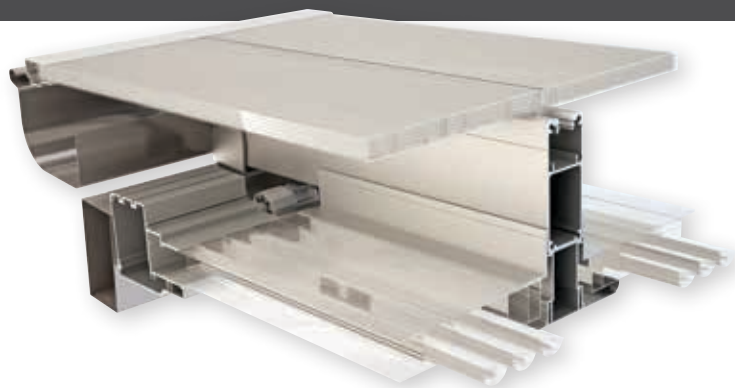
Controlite® features rotating louvres that adjust their position throughout the day to transmit the optimal amount of daylight. This intelligent system balances light levels and solar heat gain to transmit uniformly diffused light, creating comfortable indoor environments in even the harshest climates. Controlite® offers a dynamic, cost-effective solution which significantly lowers energy consumption and integrates sustainable design.





## SYSTEM BENEFITS

- Transmits uniformly diffused light
- Creates a comfortable indoor environment
- Up to 93% of solar heat gain can be blocked
- Reduced rain noise
- Higher thermal insulation
- Free thermal expansion
- Mechanisms are easy to reach and maintain



International version



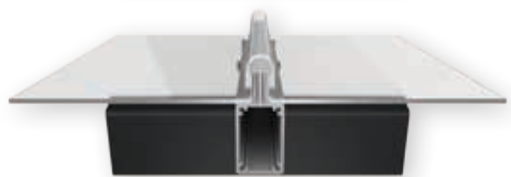
# DANPAL® COMPACT ROOFING

## HIGH IMPACT TRANSPARENT SOLUTION

### Transparency Without Limits

Enjoy the appearance of glass together with all the advantages of polycarbonate. Danpalon® Compact is a 4mm thick solid panel that provides a 'glass-like' appearance, together with strength, insulating qualities, flexibility, curving ability, low weight and UV protection. The Danpalon® panels' standing-seam connection system allows architects complete freedom to design spectacular glazed areas of unlimited size, angle or colour. Up to 12.0m long panels are supplied. Available as straight panels in a range of colours up to 12 metres long, they can be easily cold curved on site - adapting to all creative transparency ideas.





### SYSTEM BENEFITS

- Pure transparency
- Lightweight
- Waterproof
- Easy installation
- Impact resistance
- Long panels, curvable on site

Luminaire Apartments  
Bowden SA.  
Architect: Tectvs  
Builder: Catcorp  
Contractor: Klek Pty Ltd.



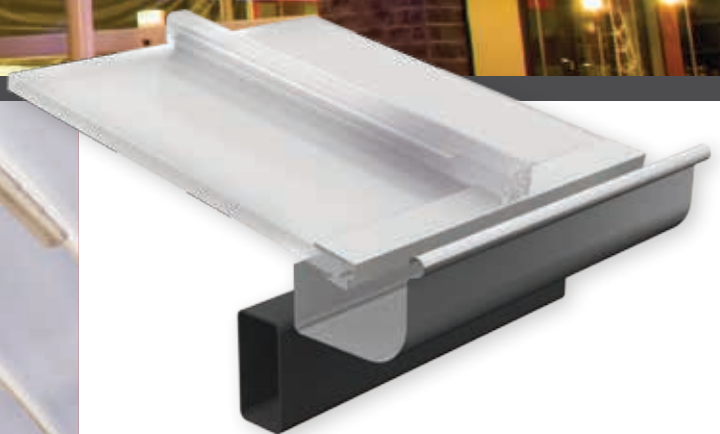
# DANPAL® FREESPAN ROOFING

## RAFTER GLAZING SOLUTION

Danpal® Freespan Rafters are fully certified for a wide range of designs that are easy to install.

Waterford Plaza Shopping Centre | Karawara, WA | Hames Sharley





### SYSTEM BENEFITS

- Easy-to-install self-supporting system
- Compatible with Controlite system

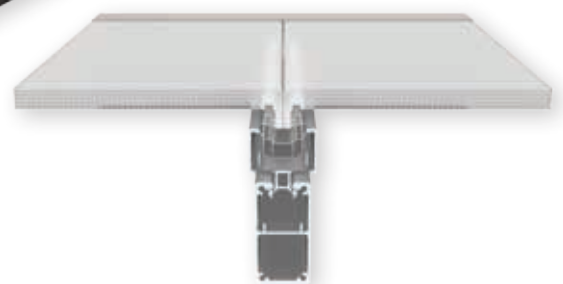
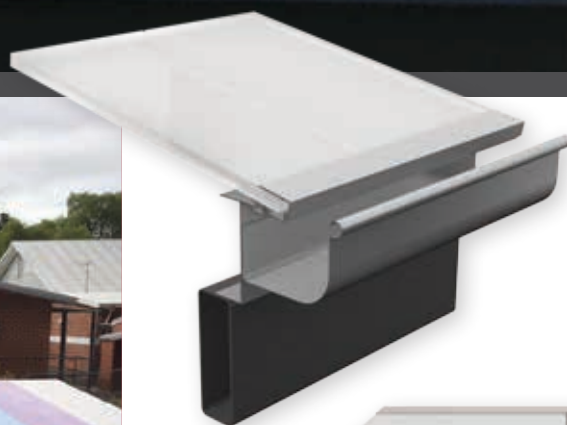




# DANPAL® SEAMLESS ROOFING

## SEAMLESS GLAZING SOLUTION

The Seamless Roof System offers large spanning roofs with a flush exterior surface, minimizing maintenance requirements and creating a spectacular clean visual look.



### SYSTEM BENEFITS

- Flush external roof finish
- Flexible joint allows for lateral movement
- Easy-to-install self-supporting system
- Compatible with Controlite system

West Leederville Primary School | West Leederville, WA  
Slavin Architects



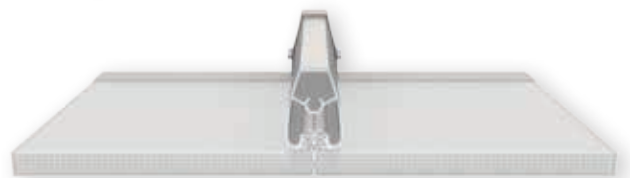


# DANPAL<sup>®</sup> SOLARSPACE ROOFING

## FRAMELESS GLAZING SOLUTION

Solarspace offer large spanning roofs with no visible framework. The connection sits on top of the roof, locking the panels together to provide a flush ceiling-like finish on the underside.





### SYSTEM BENEFITS

- Flush ceiling-like finish
- Simple pivoting connection
- Easy-to-install
- Self-supporting system



# DANPAL® TRADITIONAL ROOFING

## MODULAR GLAZING SOLUTION

### Get Natural Light from Above

Danpal® Roofing Solutions are a range of dry glazed translucent proprietary designs. They are suitable for installation above or below various types of structures (according to engineering and design requirements). The system contains a variety of snap-on interlocking dry-glazed connectors made of polycarbonate or aluminium.

Danpal® Roofing systems are suitable for a wide range of weather conditions and offer high impact resistance. The large variety of aspects, colours, finishes and special effects provide a spectacular range of creative options.





## SYSTEM BENEFITS

- Easy and fast installation
- Free floating system allowing full thermal expansion
- Good resistance to wind and snow loads
- Flexible system suitable for many types of roof designs
- Lightweight

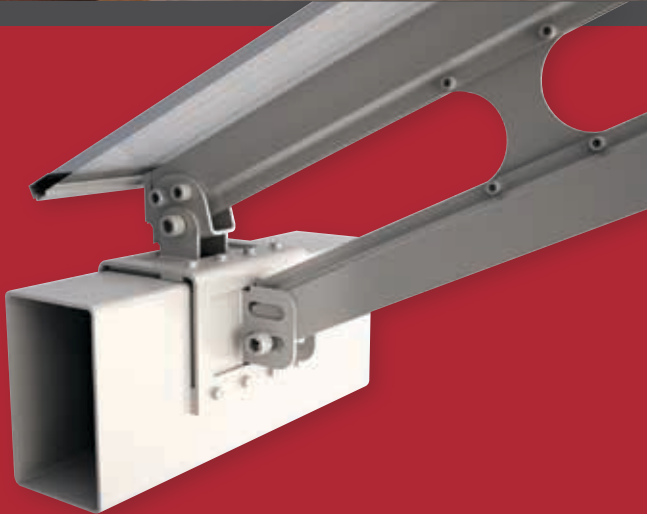




# SPACETRUSSE<sup>®</sup> SYSTEM

## IDEAL FOR LARGE SHADE STRUCTURES

The Spacetruss system simplifies the design, procurement and construction of large free-spanning canopies up to 45 metres. It features a combination of aluminium and steel components that are economical and attractive, maximising visual cleanliness while minimising material costs.



### SYSTEM BENEFITS

- Large free spans up to 45 metres
- Versatile, convenient pre-engineered solution
- Structurally efficient and affordable
- Suits various roof types









# SKYLIGHT SOLUTIONS

Danpal's skylight systems allow you to explore new possibilities for designing buildings filled with light – with control of light intensity and energy consumption together with flexible installation.

- DANPAVAULT



# DANPAVAULT

## BARREL VAULT SKYLIGHT SYSTEM

### The Sky is No Limit

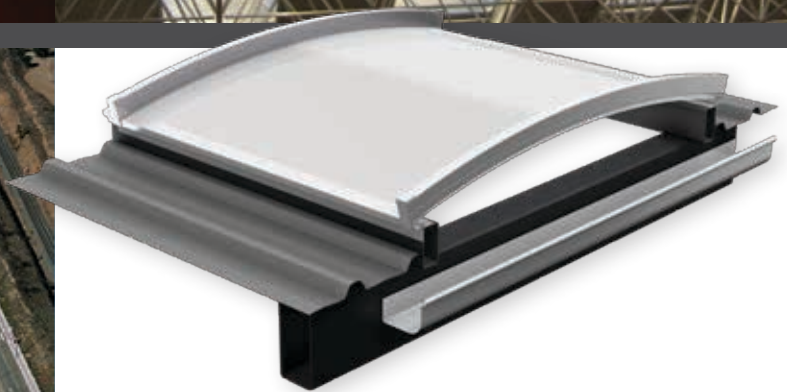
The Danpavault Barrel Vault Skylight System combines all the advantages of Danpalon® together with a skylight of unlimited length, offering easy integration with various roof types including profiled metal and concrete.

Danpavault's unique structure transmits an even diffusion of natural light, delivering superior durability, thermal insulation and extended UV protection.

The Danpavault system can be installed as a self-supporting skylight or over a metal structure covering a large range of radii and spans. It can be installed over small or large spans by adding aluminium framing options, such as spacers, bars or connectors.

Plaza de Toros de Illescas, Toledo, Spain  
Danpavault System  
Architect: Diego Garteiz from DGM Arquitectos





### SYSTEM BENEFITS

- Unlimited length
- Allows a greater amount of light compared to flat light openings per area of roof light opening
- Self supporting skylight
- Easy to install and compatible with many roof types
- Excellent light diffusion
- 100% watertight
- High load capacity







# SHADING SOLUTIONS

Danpal® Shading Solutions offer ultimate control over thermal and solar dynamics, as well as superior durability and UV protection. Available in a wide variety of colours and finishes to spark your imagination.

- DANPAL® LOUVRE





# DANPAL® LOUVRE SYSTEM

## OPERABLE LOUVRE SOLUTION

### The Creative Way to Control Light & Heat

Danpalon® Louvre is a translucent shading system that provides maximum control over light and heat, extended UV protection and high impact resistance. Users can adjust the louvres to create their desired balance of light and shade. With Danpal®, shading becomes a creative tool to dynamically transform the exterior. Available in a variety of colours, finishes and effects, it gives an appealing, innovative exterior design to new or refurbished buildings.



## SYSTEM BENEFITS

- Lightweight
- Easy fabrication on-site or off-site
- Quick, easy and cost effective installation
- Recyclable materials
- High security
- Extended UV protection
- Wide variety of colours and finishes







# INTERIOR SOLUTIONS

Innovative interior solutions with superior  
light and visual appearance.

- DANPAL® INTERIOR AND DECORATION

# DANPAL® INTERIOR AND DECORATION

INNOVATIVE SOLUTIONS FOR INTERIORS  
WITH A UNIQUE RANGE OF DISTINCTIVE  
VISUAL APPEARANCES



## Create New Atmospheres

Danpal® Interior Solutions enable designers to explore new aesthetic dimensions, creating revolutionary spaces transformed by light. Danpal® brightens a multitude of interior spaces: walls, partitions and interior ceilings open up under the effect of the light setting to create a unique ambience. Danpalon's unique Multicell structure provides exceptional quality of light, a rich non-industrial visual appeal and superior durability.

With Danpal®, architects can create partitions that evoke both intimacy and openness, due to their semi-transparent look. Danpalon's interior ceilings make the ceiling an integral part of the design space. Our wide range of lighting options bring increased depth and illuminate the user's experience. Use your creativity to make light an attraction with Danpal® Interior.



## SYSTEM BENEFITS

- Wide range of colours and textures
- Unlimited design flexibility
- Lightweight
- Easy to install
- Allows for both open and intimate spaces



# IDEAL FOR CUSTOMISED AND UNITISED SOLUTIONS



## TURNING YOUR VISION INTO REALITY

For any application - whether it's a transportation centre, sports hall, school building or shopping mall - Danpal's systems provide unique advantages within bespoke solutions.

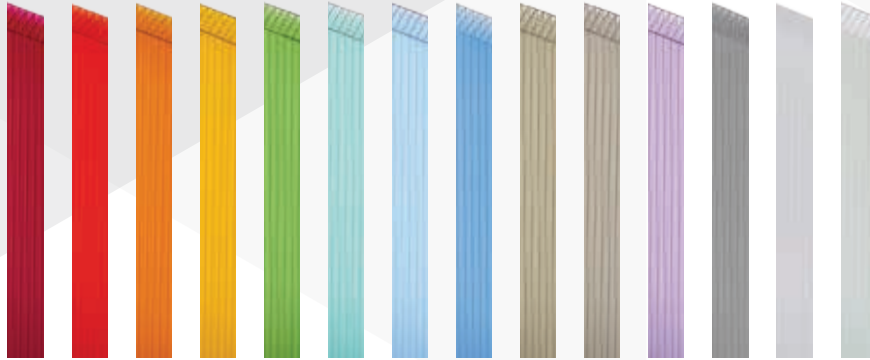
- Bold design to complement all architectural needs.
- Superior natural light properties.
- Excellent thermal insulation.
- Top loading performance.
- Easy and efficient installation.
- Top quality and long term product lifetime service.

## OUR FULL SERVICE OFFERING

- Project engineers and the sales force in your region will accompany you and follow up your projects, from their inception to completion.
- Our design office will assist and guide you in the implementation of the most suitable solution for your specific needs.
- The order processing and preparation service offers customised orders, reinforced packaging, accurate labelling and impeccable delivery.
- Our support service will promptly respond and assist you in finding solutions for your on-site risks.
- We offer a full material warranty and are committed to meeting our customers' deadlines.



## COLOUR YOUR ATMOSPHERE WITH THE DANPAL® PALETTE



## ABOUT THE COMPANY

### Innovative light architecture systems for building envelopes

Danpal® are creators of exceptional light-transmitting architectural systems for building envelopes, providing optimal solar and thermal comfort.

For over 30 years, our innovative systems have helped architects to transform light (both natural and artificial) into a powerful and versatile tool, for architectural creations that are internally and externally radiant.

An industry visionary, Danpal® are originators of the Danpalon® translucent panel standing seam system - a light architecture solution used around the world in commercial, education, transport, health, sports and high-tech projects.

Today, the company offers complete systems - providing total solutions for the building envelope. Danpal® designs, manufactures and distributes an unmatched range of daylighting systems for all types of building requirements - from facades, cladding, roofs, skylights, shading, to interior and outdoor applications.

Danpal® systems are built around innovative technologies, deep architectural know-how and the ever evolving needs of our clients. Operating in five continents, Danpal® inspires architectural creativity with its rainbow of light architecture solutions.

### Danpalon® Interior and Decoration is an integral part of Danpal's range of systems - giving you a complete solution



FACADES



CLADDING



ROOFING



SKYLIGHTS



SHADING



INTERIOR