

# DANPAL<sup>®</sup> FAÇADE SYSTEM

Single Glazed  
Translucent Facade



FACADE



# THE OPTIMAL BALANCE OF SOLAR AND THERMAL DYNAMICS



When it comes to the perfect facade, finding the equilibrium is key. Excess light results in undesired glare and intolerable ambient heat. Using materials with superior flexibility, transparency, and tonal qualities compared to glass, Danpal system delivers the perfect balance of light and thermal dynamics for any facade. Thanks to excellent insulating properties, Danpal's facade systems assure balanced thermal comfort, while their transparency ensures ultimate visual comfort with homogenous light diffusion.

## GIVING ARCHITECTS THE ABILITY TO PLAY WITH LIGHT

Danpal's façade glazing materials give architects the artistic freedom to experiment with daylight in ever more creative and inventive ways. Architects can control the amount of light, choose whether to integrate with glass, or hide various elements. Our extensive range of colours, textures, finishes, reflections, and lighting offer architects a rich palette for creating inspired facades that illuminate the user's experience during the day, while our lighting options transform the façade into a light box at night.

## TRANSLUCENT GLAZING - SUPERIOR LIGHT DIFFUSION

The glazing panel's unique structure transmits an even diffusion of natural light.

Specifically designed for architectural daylight applications, the tight spacing between the ribs produces an aesthetically appealing look.

## UNPARALLELED DESIGN FLEXIBILITY

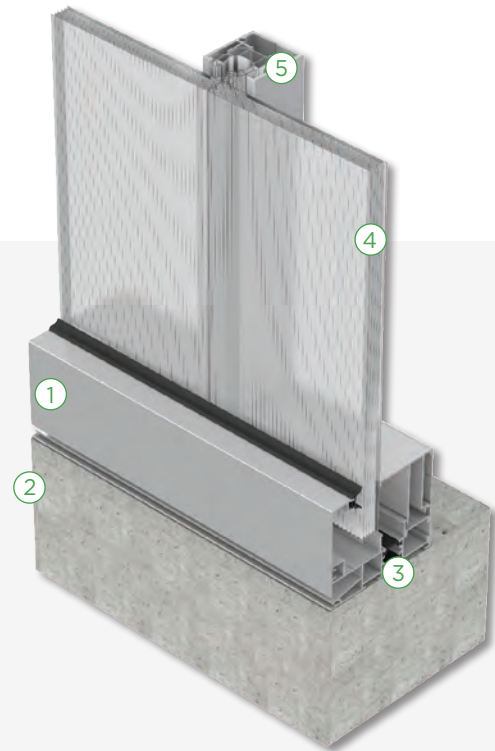
Concealed joints create a flush external that can warp and twist if necessary.

## HIGH SECURITY

The double "click" locking seam enables higher load resistance.

## UNIQUE BENEFITS:

- Codemark Certified system
- High impact resistance
- UV protection
- Even light diffusion
- Light weight
- Freedom of design
- Superior air and water tightness
- Highly secure
- Easy installation



1. System frame adapted to different panels
2. Perimeter details designed to deal with building and regulation requirements
3. Thermally broken product frame with special foam
4. Range of Danpalon® panels
5. Various connectors integrated into the system



## HIGH THERMAL INSULATION

The Danpal Façade's unique cell structure applies better thermal insulation. This results in improved 'U' and 'R' Values, offering significant energy efficiencies.

## HIGH IMPACT RESISTANCE & STRENGTH

The panel's special micro cell structure offers the highest resistance to impact and hail damage.

## SUPERIOR AIR AND WATER TIGHTNESS

Connecting system assures the prevention of air and water penetration into the building.

## EXTENDED UV PROTECTION

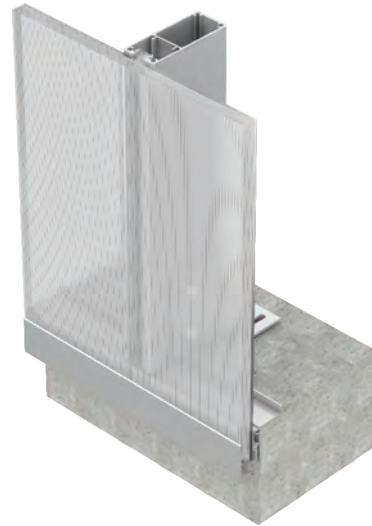
Danpal facade system offers top quality co-extended UV protection Danpalon Panels resulting in a longer system life.

## EASY CONSTRUCTION

Quick, simple and cost effective installation.

## Certified system

Compliant with ISO9001 and CSTB requirements.

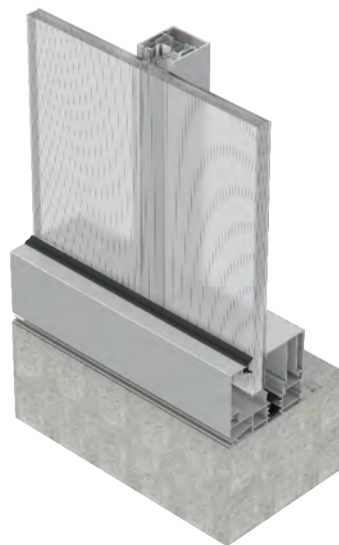
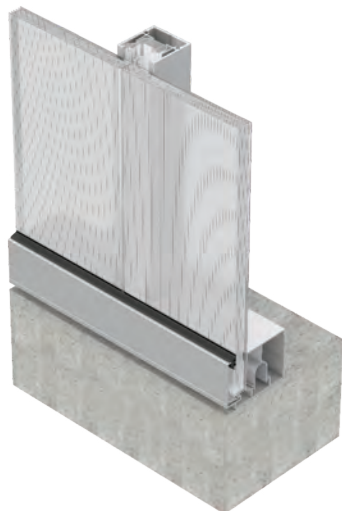


**TRADITIONAL SYSTEM**

Economical façade system with basic framing

**SEAMLESS SYSTEM**

Large-spanning façade system with basic framing



**ADVANCED NM SYSTEM**

Advanced facade system with integral frame

**THERMAL ADVANCED AIRPT SYSTEM**

Advanced facade system with integrated subsill and frame and thermal break for advanced performance

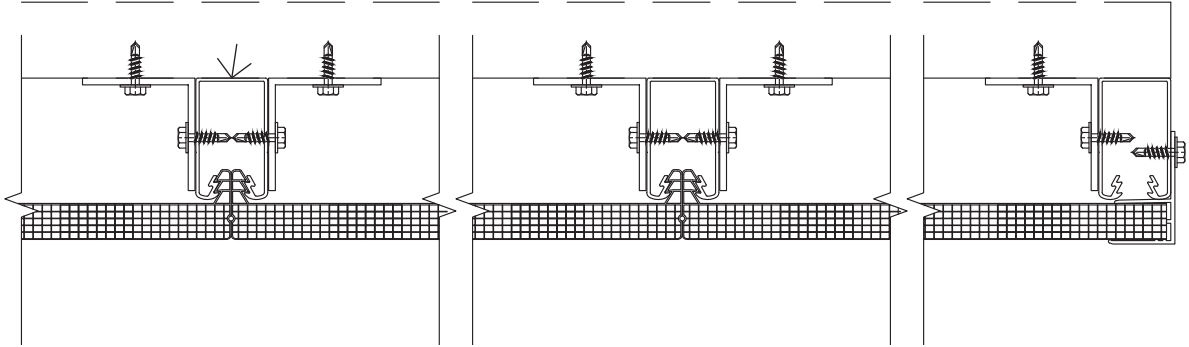
| TRADITIONAL SPANS       |           |           |           |           |         |           |
|-------------------------|-----------|-----------|-----------|-----------|---------|-----------|
| CONNECTOR               | THICKNESS | 10MM      | 12MM      | 16MM      | 22MM    | 30MM*     |
|                         | PROFILE   | HONEYCOMB | MULTICELL | MULTICELL | 3D LITE | MULTICELL |
|                         | WIDTH     | 600MM     | 900MM     | 1040MM    | 600MM   | 900MM     |
| POLYCARBONATE CONNECTOR | MID SPAN  | 1100      | 1100      | 1300      | 1100    | 1100      |
|                         | END SPAN  | 800       | 800       | 900       | 800     | 800       |
| 30MM CONNECTOR          | MID SPAN  | 1600      | 1600      | 1600      | 1600    | 1600      |
|                         | END SPAN  | 1200      | 1200      | 1200      | 1200    | 1200      |
| 54MM CONNECTOR          | MID SPAN  | 2100      | 2000      | 1800      | 2100    | 2000      |
|                         | END SPAN  | 1500      | 1450      | 1400      | 1500    | 1450      |

| OTHER SYSTEM SPANS |           |           |           |           |         |           |
|--------------------|-----------|-----------|-----------|-----------|---------|-----------|
| SYSTEM             | THICKNESS | 10MM      | 12MM      | 16MM      | 22MM    | 35MM*     |
|                    | PROFILE   | HONEYCOMB | MULTICELL | MULTICELL | 3D LITE | MULTICELL |
|                    | WIDTH     | 600MM     | 900MM     | 1040MM    | 600MM   | 900MM     |
| NM / AIR PT        | DPAC54    | 2100      | 2000      | 1800      | 2100    | N/A       |
|                    | DPAEC50   | 3600      | 3250      | 3200      | 3600    | N/A       |
| SEAMLESS           | DPAC40    | 2700      | 2450      | 2400      | 2700    | 2450      |
|                    | DPAC50    | 3850      | 3650      | 3500      | 3850    | 3650      |
|                    | DPAC60    | 4500      | 4400      | 4200      | 4500    | 4400      |
|                    | DPAC70    | 5100      | 4900      | 4600      | 5100    | 4900      |
|                    | DPAC80    | 5500      | 5300      | 5100      | 5500    | 5300      |
|                    | DPAC100   | 6900      | 6400      | 6000      | 6900    | 6400      |
|                    | DPAC150   | 7800      | 6800      | 6600      | 7800    | 6800      |

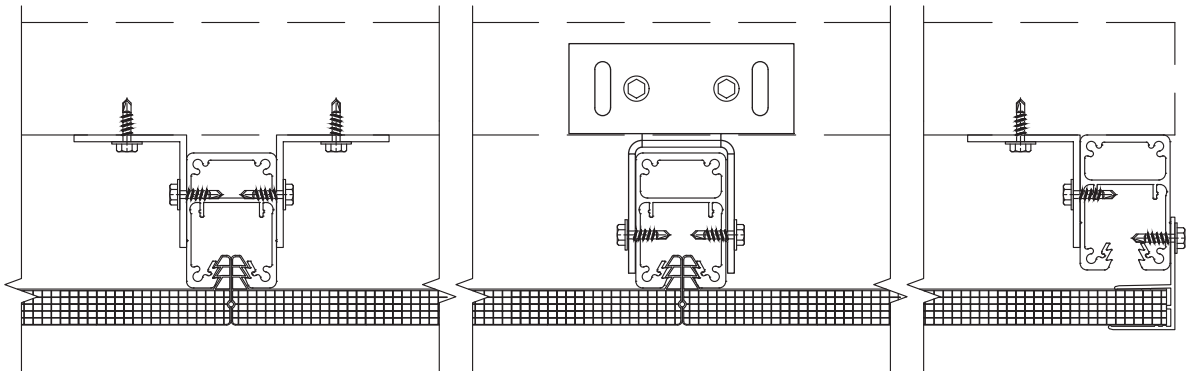
\*Not stocked in Australia. Lead time 10 weeks.  
 Design load 1 kPA (ultimate) 0.7 kPA (serviceable). Deflection criteria span / 50.  
 Consult Danpal for any other situations.

| SPECIFICATIONS  |  |                          |
|---|--|--------------------------|
| Panel length  | Up to 11.98m in stock<br>(longer panels can be made to order)                      |                          |
| Fire performance                                      | AS 5637.1:2015 Group 1   |                          |
| Special finishes                                      | Pearl / Low E, Softlite, HP. Refer Glazing Material brochure for more information. |                          |
| Suitable for panel                                    | <b>NM system</b>   | <b>AirPT system</b>      |
|   | 10, 16   | 16,22                    |
| Water/Air permeability<br>50 Pa m <sup>3</sup> /(h.m) | Positive Pressure - 0.20   | Positive Pressure - 0.30 |
|   | Negative Pressure - 0.13   | Negative Pressure - 0.10 |

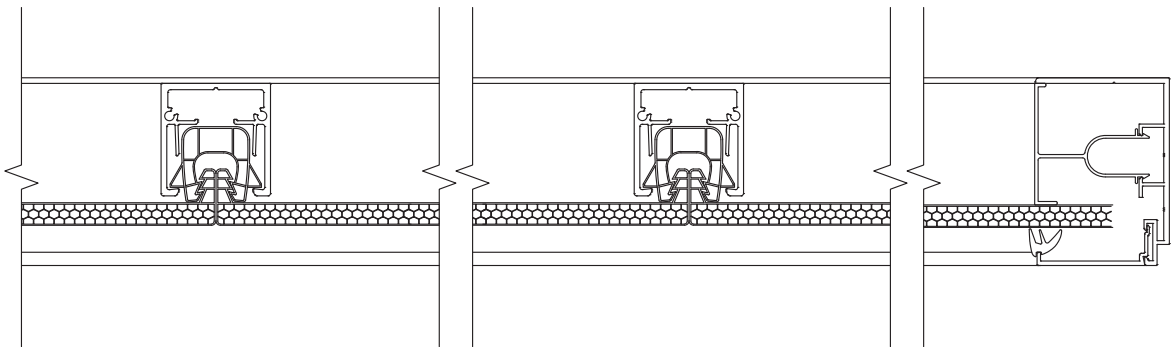
# TYPICAL PLAN DETAILS



TRADITIONAL

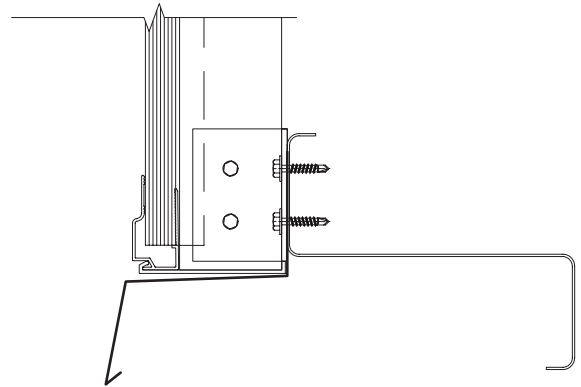
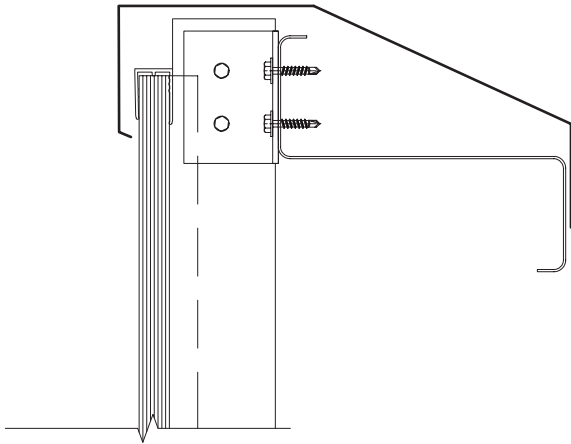


SEAMLESS

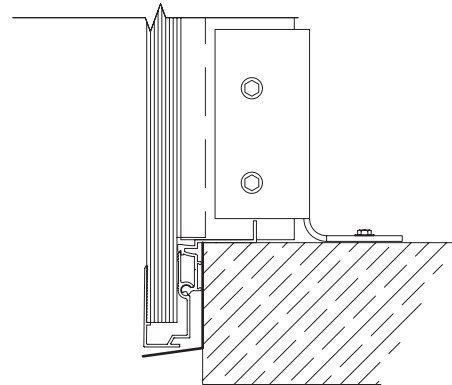
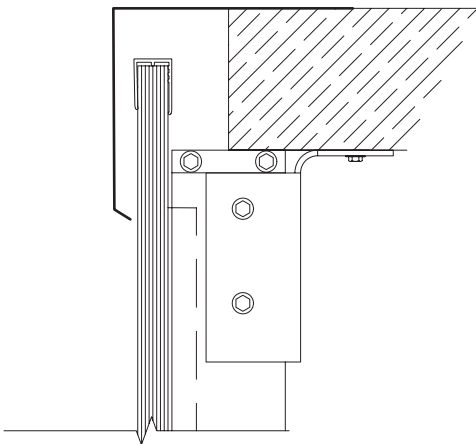


NM SYSTEM

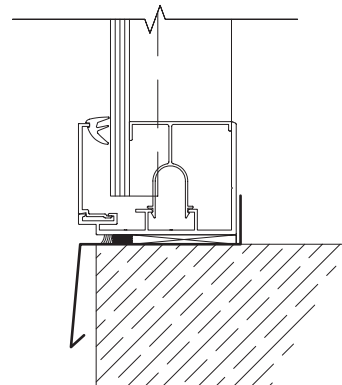
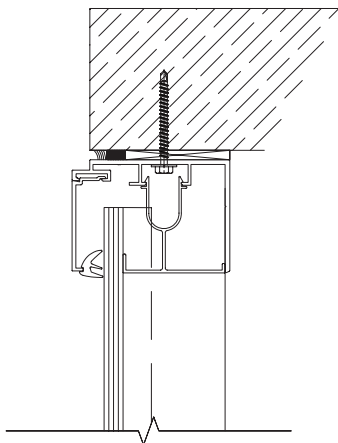
# TYPICAL SECTION DETAILS



**TRADITIONAL**



**SEAMLESS**



**NM SYSTEM**

## COLOUR YOUR ATMOSPHERE WITH THE DANPAL® PALETTE



### ABOUT THE COMPANY

#### Innovative light architecture systems for building envelopes

Danpal® are creators of exceptional light-transmitting architectural systems for building envelopes, providing optimal solar and thermal comfort.

For over 30 years, our innovative systems have helped architects to transform light (both natural and artificial) into a powerful and versatile tool, for architectural creations that are internally and externally radiant.

An industry visionary, Danpal® are originators of the Danpalon® translucent panel standing seam system - a light architecture solution used around the world in commercial, education, transport, health, sports and high-tech projects.

Today, the company offers complete systems - providing total solutions for the building envelope. Danpal® designs, manufactures and distributes an unmatched range of daylighting systems for all types of building requirements - from facades, cladding, roofs, skylights, shading, to interior and outdoor applications.

Danpal® systems are built around innovative technologies, deep architectural know-how and the ever evolving needs of our clients. Operating in five continents, Danpal® inspires architectural creativity with its rainbow of light architecture solutions.

#### Danpal® Single Glazed Facade is an integral part of Danpal's range of systems - giving you a complete solution



FACADES



CLADDING



ROOFING



SKYLIGHTS



SHADING



INTERIOR

[www.danpal.com.au](http://www.danpal.com.au)

