



DANPAL® LOUVRE SYSTEM

DANPA SHADE

Transparent and Translucent
Shading System



SHADING

Danpal®
Light Architecture

MAXIMUM CONTROL OVER LIGHT AND HEAT

DANPASHADE OFFERS TWO POLYCARBONATE SHADING SYSTEMS THAT PROVIDES MAXIMUM CONTROL OVER LIGHT AND HEAT WITH COMPLETE UV PROTECTION. THE LOUVRE PANELS ARE AVAILABLE IN A WIDE VARIETY OF COLOURS AND FINISHES, PROVIDING BOTH VISUAL AND CLIMATIC BENEFITS TO NEW OR REFURBISHED BUILDINGS.

Play with light, shade and colour

Users can adjust the louvres to create their desired balance of light and shade, achieving the right atmosphere.

DanpaShade shading systems can be installed on various types of building envelopes in a variety of colour combinations and finishes - stretching your imagination to the limit.

All-weather design

Suitable in all weather conditions and compliant with all building code requirements.

Made with Microcell technology, the latest and most advanced system for architectural shading applications, DanpaShade offers high impact resistance. The dry-glazed systems provide simple and low cost installation.



Sydney Ports | Port Botany | Jackson Teece Architects



WIDE VARIETY OF COLOURS AND FINISHES

SUPERIOR LIGHT AND VISUAL APPEARANCE

THE PANEL'S UNIQUE STRUCTURE
TRANSMITS AN EVEN DIFFUSION
OF NATURAL LIGHT, PRODUCING
A RICH LOOK

Specifically designed for architectural daylight applications, the tight spacing between the ribs produces a superior quality of light and an aesthetically appealing presence. Customers can select various colours and light transmission levels, with either a glossy or matt surface finish.

High Resistance

The system provides a double tooth grip-lock connection that ensures extended longevity even when subject to high wind loads.

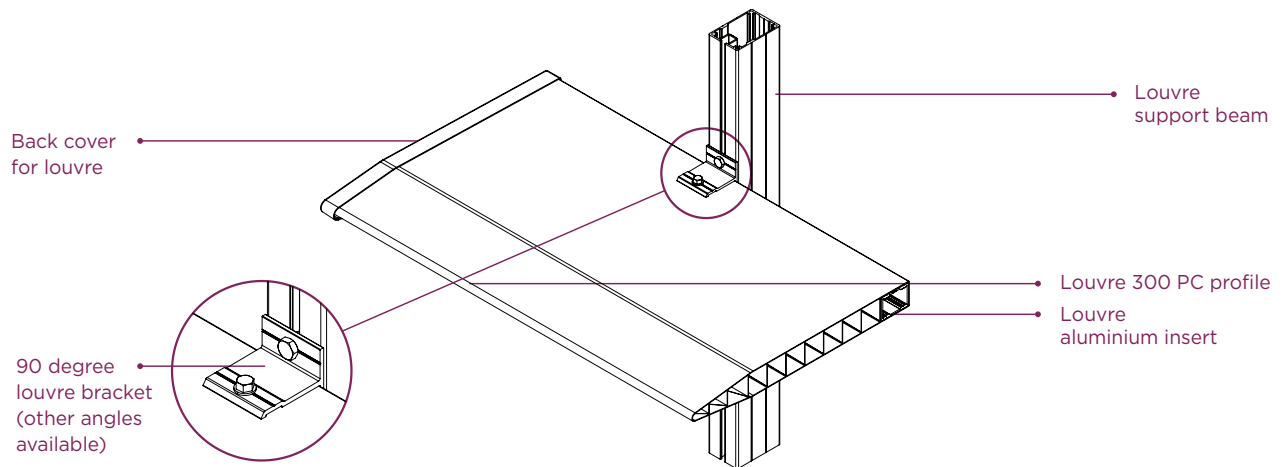
Extended UV Protection

Danpal® panels offer co-extruded UV protection – resulting in longer system life.



TO SPARK YOUR IMAGINATION

DANPA SHADE AURA SYSTEM



Reflective Grey | Vertical 22.5°

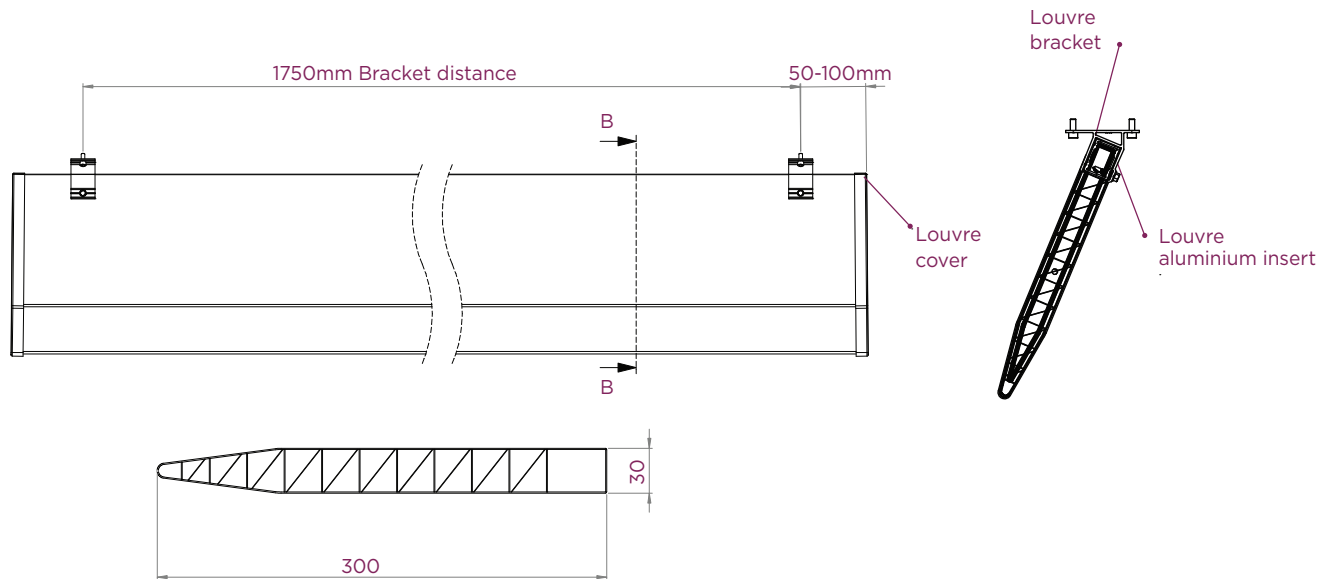


Sky Blue | Horizontal 90°



SYSTEM BENEFITS

- Unique new shape
- Unique new cantilevered fixing method at various angles
- Fixed louvres provide ambient light plus shading for energy efficiency benefits through all seasons
- Unique 3D KINETIC internal structure
- Dual internal colour options
- Vertical or horizontal installation
- Variable light transmission & shading
- Light and easy to install



DIMENSIONS

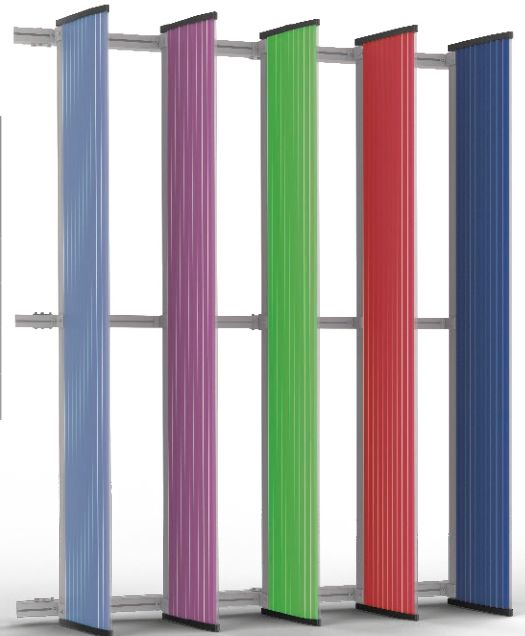
WIDTH [mm]	THICKNESS [mm]	WEIGHT [g\m]	WEIGHT [g\m ²]*	PITCH OPTIONS	MAX LENGTH
300	30	1,000	3,000	22.5°, 45°, 90°	6000

* 3 louvres per metre

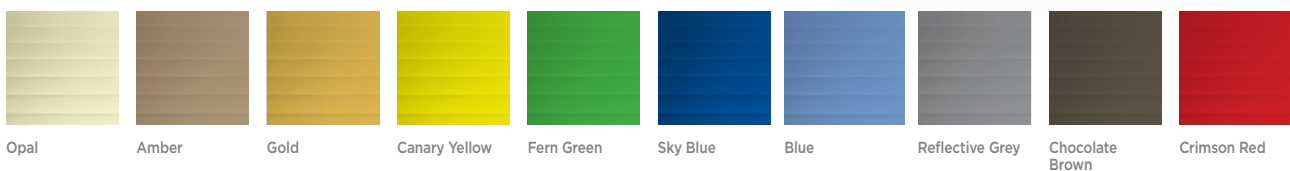
TECHNICAL INFORMATION

BRACKET SPACING ACCORDING TO SITE LOCATION				
	Terrain Category 1	Terrain Category 2	Terrain Category 3	Louvre Orientation
Region A	1520mm	1950mm	1950mm	Horizontal
Region A	1820mm	1950mm	1950mm	Vertical
Region B	940mm	1240mm	1560mm	Horizontal
Region B	1130mm	1490mm	1870mm	Vertical

* Full shielding and flat topography assumed.

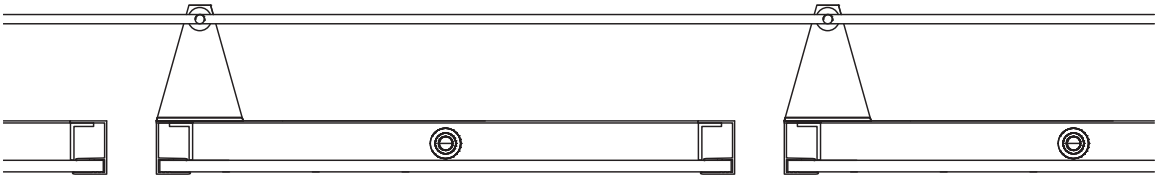


COLOUR WITH SHADE

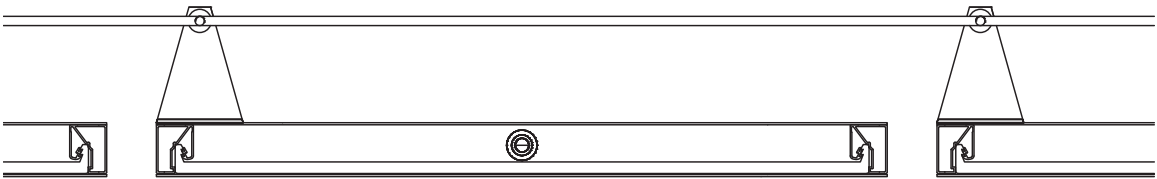


DANPA SHADE

UMBRA SYSTEM



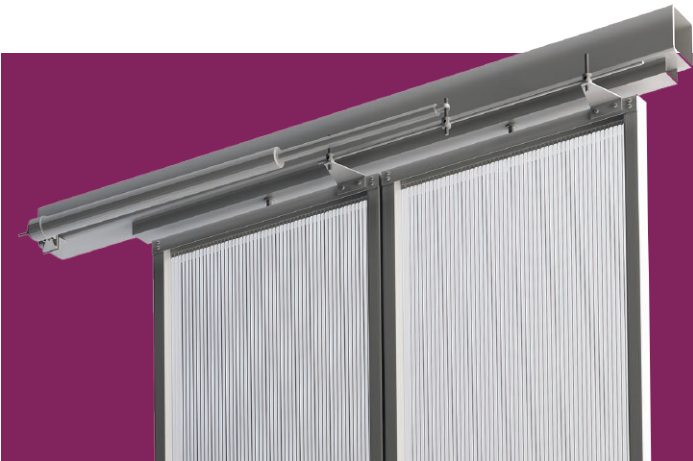
VARIABLE WIDTH OPTION: SIDE FRAME OPTION



FIXED WIDTH OPTION (632, 932 OR 1072MM MODULE): SIDE FRAME DETAIL

TECHNICAL INFORMATION

LOUVRE WIDTH	Up to 1072mm (including side frame)
FIRE PERFORMANCE	AS5637.1 Group 1
PANEL OPTIONS	10mm 600mm wide 12mm up to 900mm wide 16mm up to 1040mm wide
FINISH OPTIONS	Softlite and HP (subject to production lead time)

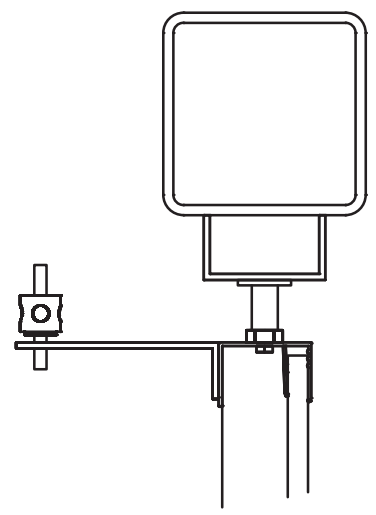
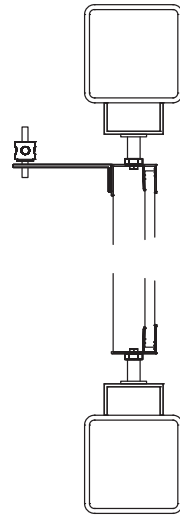
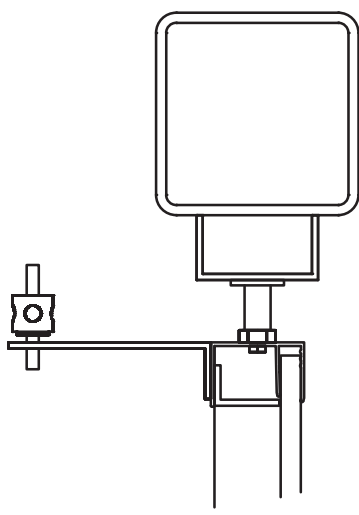
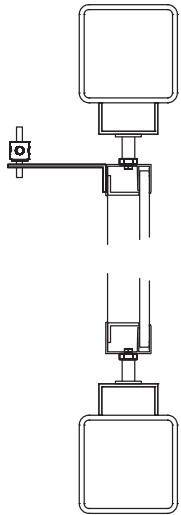


SYSTEM BENEFITS

- Lightweight (using Danpalon or 3D Lite panels)
- Wide range of colours and finishes
- Quick, easy and cost effective installation
- Recyclable materials
- Fully adjustable and compatible with building automation systems
- Prefabricated to any size required

	10mm fixed	10mm variable	12mm fixed	12mm variable	16mm fixed	16mm variable
	632mm	up to 600mm	932mm	up to 900mm	1072mm	up to 1040mm
Region A TC1	3000mm	3300mm	2800mm	3100mm	2900mm	3400mm
Region A TC3	3500mm	3900mm	3200mm	3600mm	3500mm	3900mm
Region B TC1	2800mm	3300mm	2300mm	2700mm	2300mm	2800mm
Region B TC3	3500mm	3800mm	2800mm	3300mm	2800mm	3300mm

* Full shielding and flat topography assumed.
 ** Increased spans are possible with larger edge frames

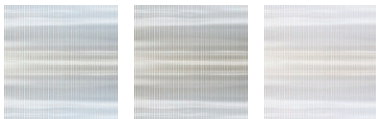


VARIABLE WIDTH OPTION: TOP FRAME DETAIL

FIXED WIDTH OPTION: TOP FRAME DETAIL

LET OUR COLOURS INSPIRE YOU

SHADES OF WHITE

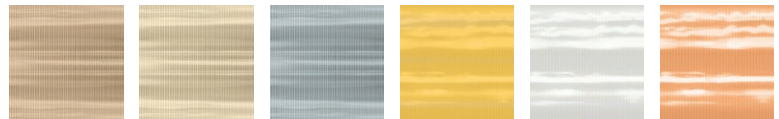


Clear**

Ice**

Opal**

METALLIC



Amber*

Bronze

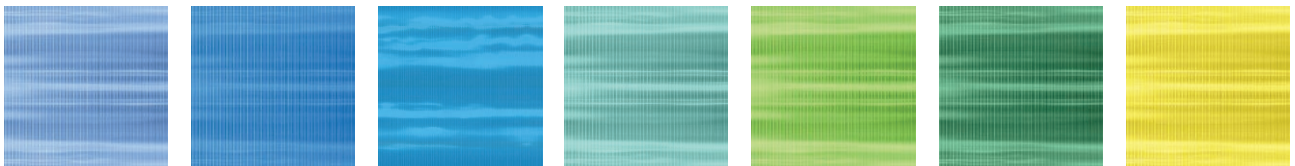
Reflective Grey**

Gold

Metallic Ice

Copper

COLOURFUL



Blue*

Sapphire Blue

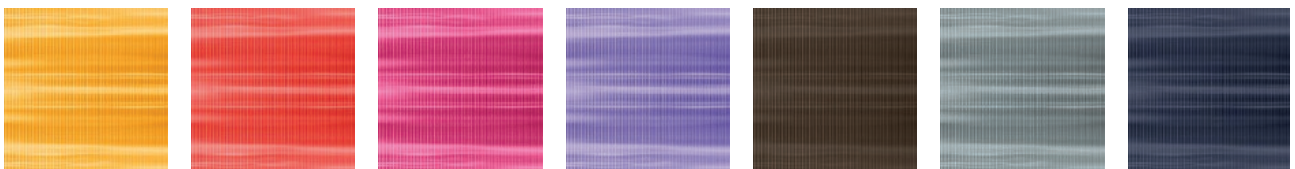
Blue Arctique

Green*

Lime Green

Empire Green

Yellow*



Orange*

Red*

Magenta

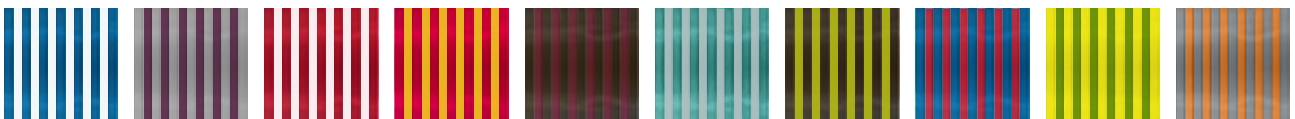
Purple*

Brown

Grey*

Black

KINETIC



White | Sky Blue

Violet Purple | Mist Grey

White | Crimson Red

Canary Yellow | Magenta

Violet Purple | Chocolate Brown

Dove Grey | Turquoise

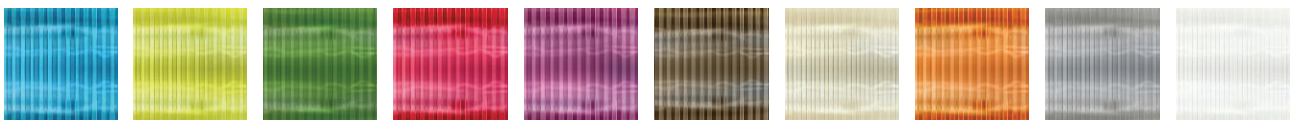
Citrus Green | Chocolate Brown

Crimson Red | Sky Blue

Fern Green | Canary Yellow

Signal Orange | Thunder Grey

3DLITE



Sky Blue

Citrus Green

Fern Green

Crimson Red

Violet Purple

Chocolate Brown

Ivory

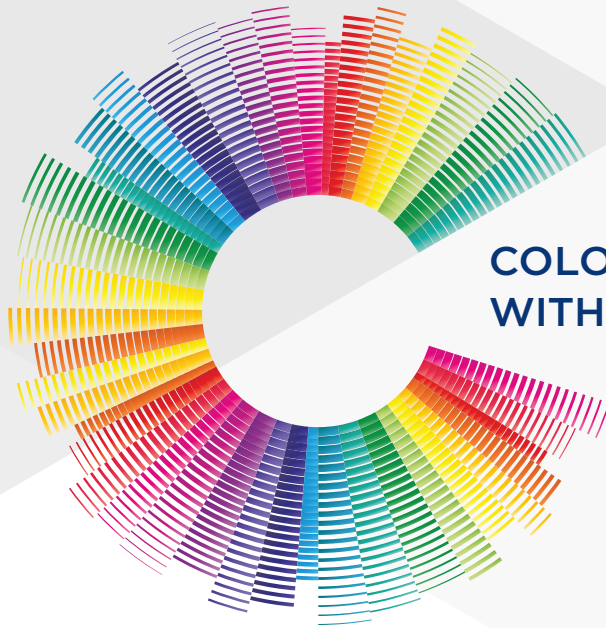
Signal Orange

Thunder Grey

White

* Locally available in 10mm thickness up to 600mm wide

** Locally available in 16mm thickness up to 1040mm wide



COLOUR YOUR ATMOSPHERE WITH THE DANPAL® PALETTE

ABOUT THE COMPANY

Innovative light architecture systems for building envelopes

Danpal® are creators of exceptional light-transmitting architectural systems for building envelopes, providing optimal solar and thermal comfort.

For 50 years, our innovative systems have helped architects to transform light (both natural and artificial) into a powerful and versatile tool, for architectural creations that are internally and externally radiant.

An industry visionary, Danpal® are originators of the Danpalon® translucent panel standing seam system - a light architecture solution used around the world in commercial, education, transport, health, sports and high-tech projects.

Today, the company offers complete systems - providing total solutions for the building envelope. Danpal® designs, manufactures and distributes an unmatched range of daylighting systems for all types of building requirements - from Façades, cladding, roofs, Skylight, shading, to interior and outdoor applications.

Danpal® systems are built around innovative technologies, deep architectural know-how and the ever evolving needs of our clients. Operating in five continents, Danpal® inspires architectural creativity with its rainbow of light architecture solutions.

Danpal® DanpaShade is an integral part of Danpal's range of systems - giving you a complete solution



FAÇADE



CLADDING



SKYLIGHT



OUTDOOR



SHADING



INTERIOR