

DANPATHERM K12



GENERAL NOTES

DRAWING INFORMATION:

This drawing set and information contained within is applicable to the standard Danpatherm K12 system using Danpalon panels and related accessories. © Copyright 2020 Danpal Australia Pty Ltd. All components shown are made-to-order from overseas.

FLASHINGS AND SEALANT:

Any flashings shown are indicative only. Suitable flashings should be designed and installed to ensure water runoff is adequately controlled and directed to suitable drainage provisions.
If required, only use neutral cure non-acetic silicone that is polycarbonate compatible.
Flashings and sealant are not supplied by Danpal.

SUB-STRUCTURE:

The sub-structure must be suitably designed by an engineer to withstand expected wind loads and should be designed to provide suitable support to the Danpal System, ensuring that Danpal maximum spans are not exceeded.

WARRANTY:

All Danpal materials are covered against defects by a 10 Year Commercial Limited Warranty. For further details or for project-specific warranty variations, please consult Danpal Australia.

DANPAL® STANDARD DETAILS ARE INTENDED ONLY AS A GUIDE FOR PROJECT-SPECIFIC ENGINEERING DOCUMENTATION BY AN APPROPRIATELY QUALIFIED ENGINEER.



Dan Pal Australia Pty Ltd
ABN 85 124 859 212
11/4-6 Junction Street, Auburn NSW 2144
Tel: 02 9475 2000 Web: www.danpal.com.au

Sheet Title:
TITLE PAGE AND GENERAL NOTES

Drawing Series:
DANPATHERM K12 SYSTEM STANDARD DETAILS

Drawn:
HL

Sheet Scale:
NTS

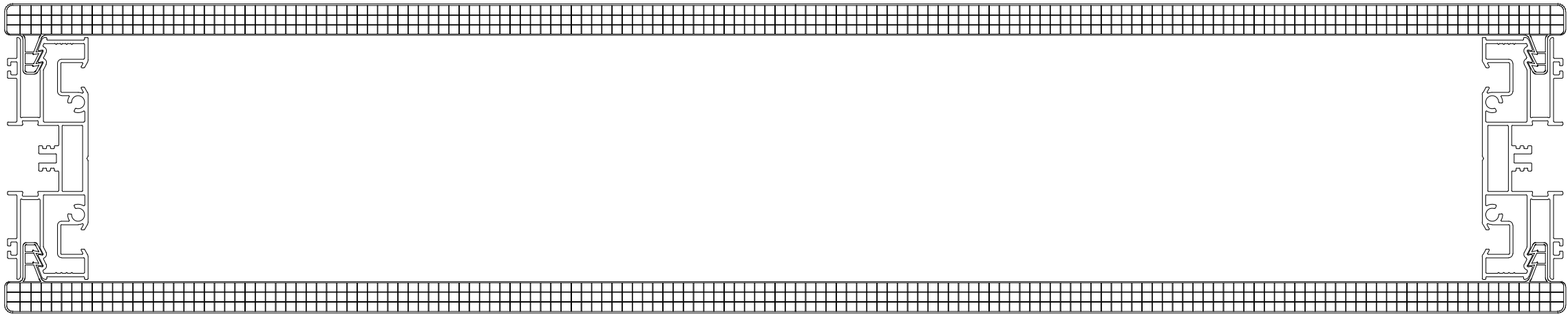
Checked:
AN

Date:
12/11/2020

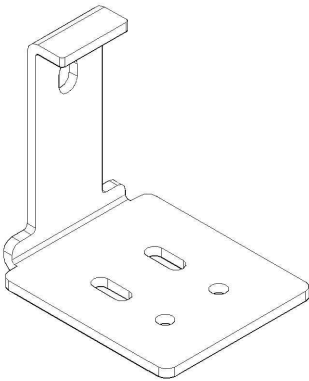
Revision:
A

Sheet:
1 of **4**

DANPATHERM K12 COMPONENTS



Danpatherm Cassette (2 layers of customised 12mm panels only)



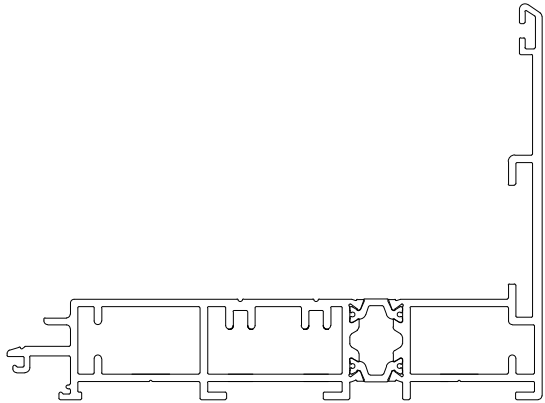
K12 Frame Fastener



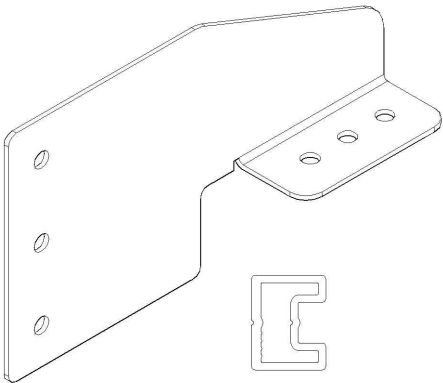
K12 Frame Cover



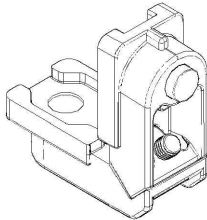
Gasket



K12 Frame Base



K12 Fastener Connector



K12 Frame Angle



Drainage cap



Dan Pal Australia Pty Ltd
ABN 85 124 859 212
11/4-6 Junction Street, Auburn NSW 2144
Tel: 02 9475 2000 Web: www.danpal.com.au

Sheet Title:
COMPONENT DETAILS

Drawing Series:
DANPATHERM K12 SYSTEM STANDARD DETAILS

Drawn:
HL

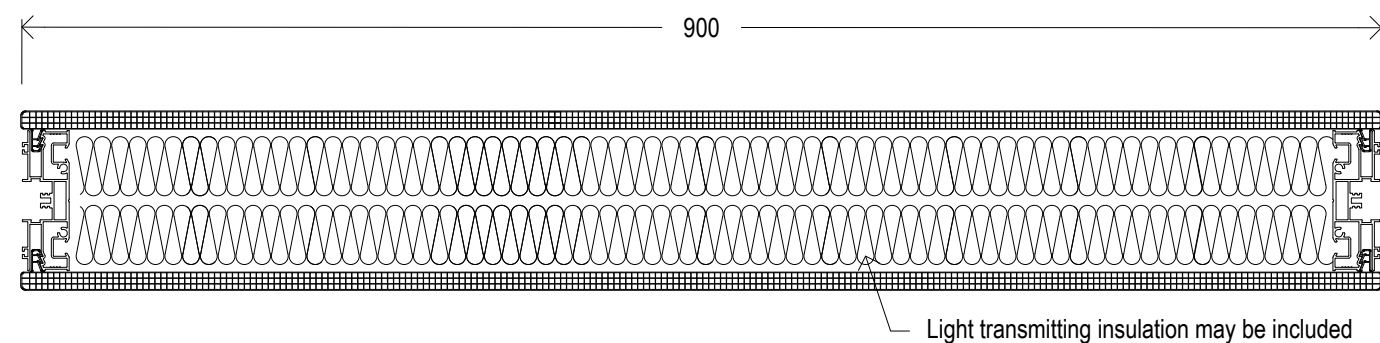
Sheet Scale:
1:2 @ A3

Checked:
AN

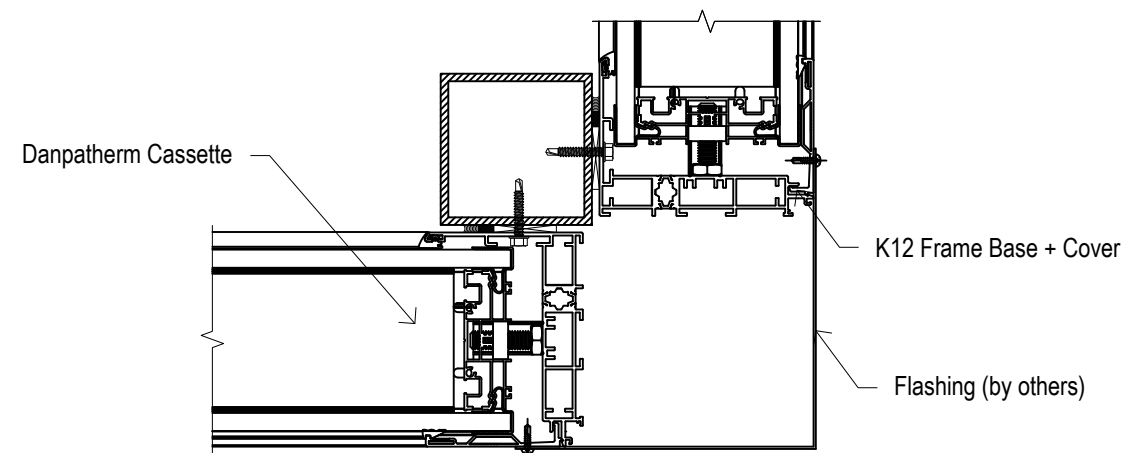
Date:
12/11/2020

Revision:
A

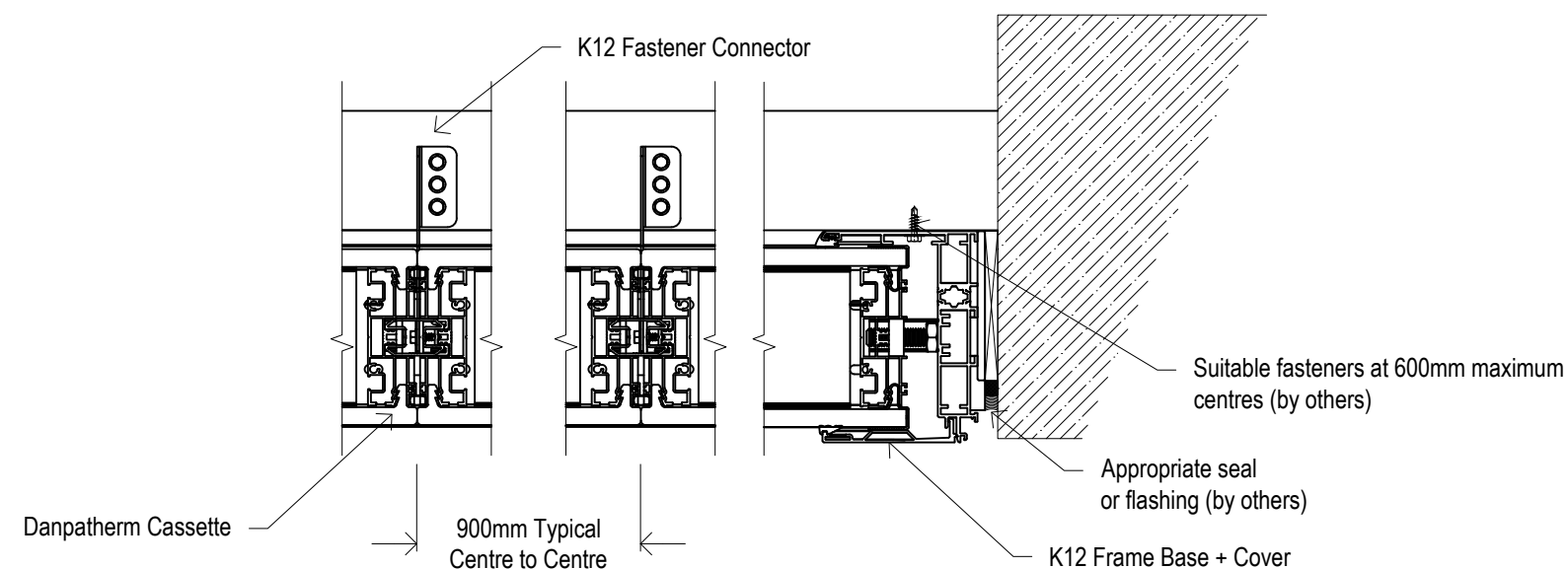
Sheet:
2 of **4**



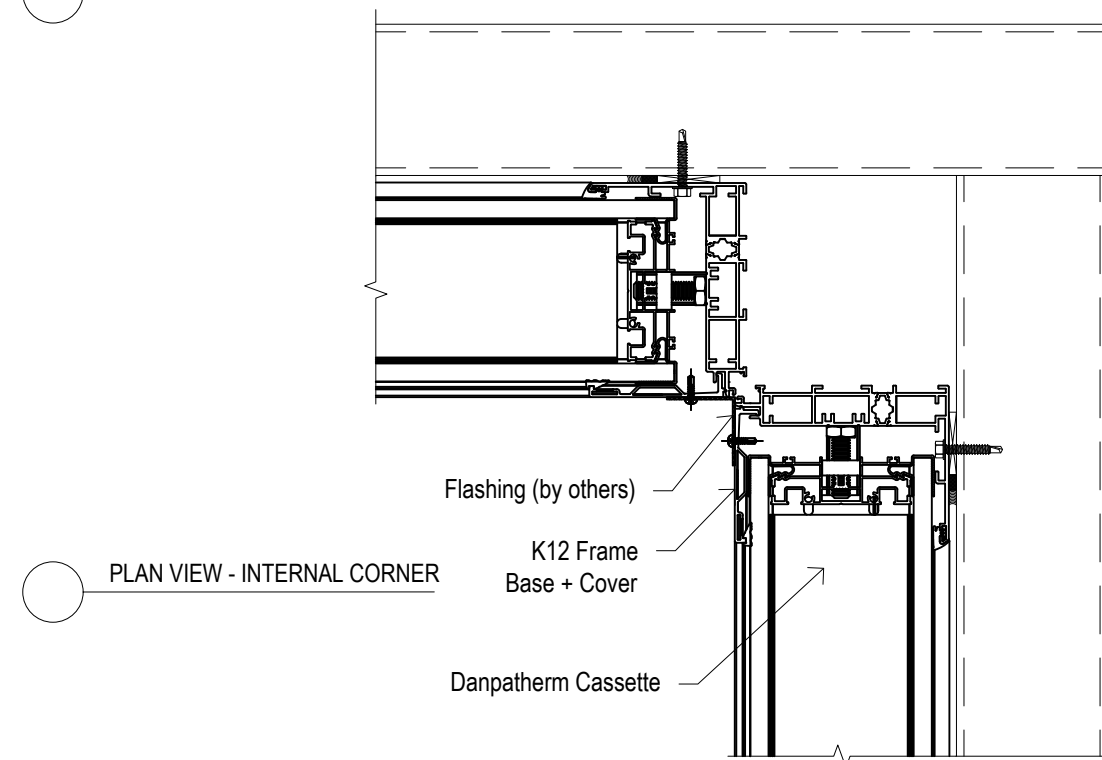
PLAN VIEW - FULL CASSETTE



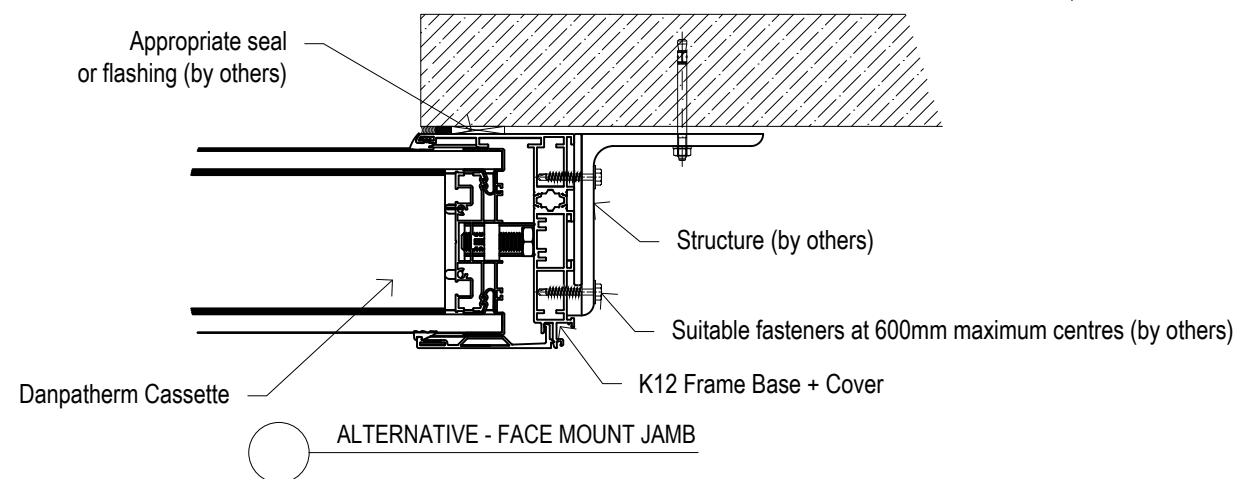
PLAN VIEW - EXTERNAL CORNER



PLAN VIEW - TYPICAL ARRANGEMENT



PLAN VIEW - INTERNAL CORNER



ALTERNATIVE - FACE MOUNT JAMB

