

DANPATHERM K7



GENERAL NOTES

DRAWING INFORMATION:

This drawing set and information contained within is applicable to the standard Danpatherm K7 system using Danpalon panels and related accessories. © Copyright 2020 Danpal Australia Pty Ltd.

FLASHINGS AND SEALANT:

Any flashings shown are indicative only. Suitable flashings should be designed and installed to ensure water runoff is adequately controlled and directed to suitable drainage provisions.

If required, only use neutral cure non-acetic silicone that is polycarbonate compatible.

Flashings and sealant are not supplied by Danpal.

SUB-STRUCTURE:

The sub-structure must be suitably designed by an engineer to withstand expected wind loads and should be designed to provide suitable support to the Danpal System, ensuring that Danpal maximum spans are not exceeded.

WARRANTY:

All Danpal materials are covered against defects by a 10 Year Commercial Limited Warranty. For further details or for project-specific warranty variations, please consult Danpal Australia.

DANPAL® STANDARD DETAILS ARE INTENDED ONLY AS A GUIDE FOR PROJECT-SPECIFIC ENGINEERING DOCUMENTATION BY AN APPROPRIATELY QUALIFIED ENGINEER.



Dan Pal Australia Pty Ltd
ABN 85 124 859 212
11/4-6 Junction Street, Auburn NSW 2144
Tel: 02 9475 2000 Web: www.danpal.com.au

Sheet Title:
TITLE PAGE AND GENERAL NOTES

Drawing Series:
DANPATHERM K7 SYSTEM STANDARD DETAILS

Drawn:

HL

Sheet Scale:

NTS

Checked:

AN

Date:

12/11/2020

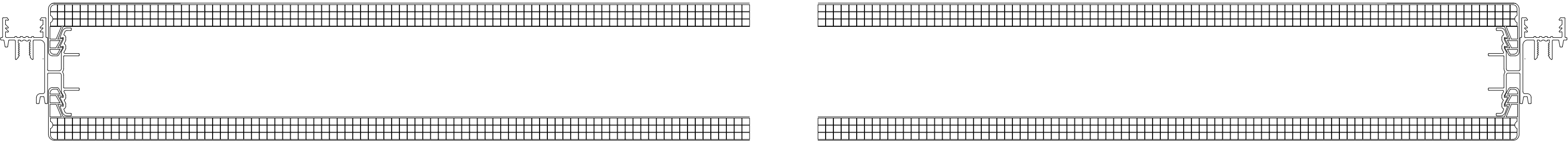
Revision:

A

Sheet:

1 of **4**

DANPATHERM COMPONENTS



Danpatherm Cassette



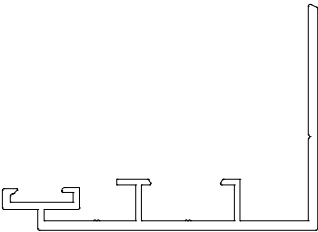
TEK45 - Hex Head 45mm
Self-Drilling Screws Suitable for Metal



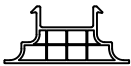
DPANMC - NM Cover
Stocked In Mill Finish. Powdercoating on Request



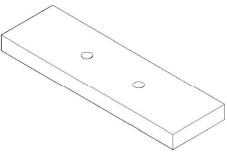
DPNMG - NM Rubber Gasket
Stocked in Light Grey



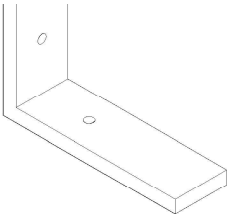
DPANMF - NM Frame
Stocked In Mill Finish. Powdercoating on Request



DPK7PolyCov - Cassette cap profile
Stocked in ice softlite



DPANMJ - NM Joiner
Aluminium



DPANMCJ - NM Corner Joiner
Aluminium



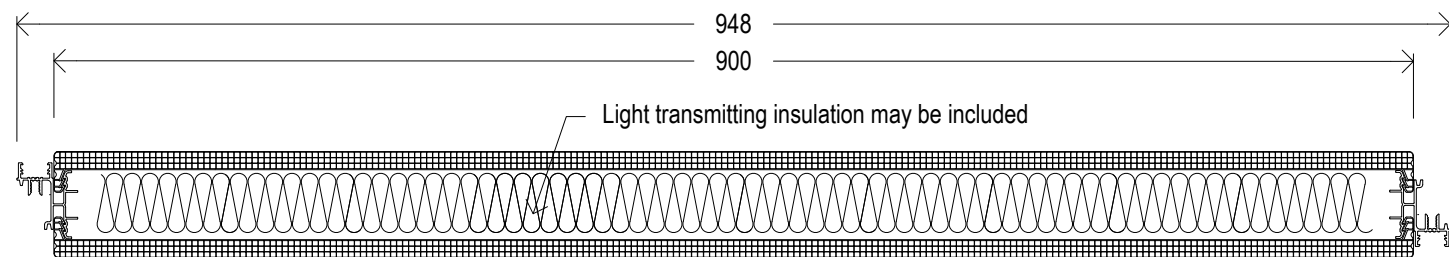
Dan Pal Australia Pty Ltd
ABN 85 124 859 212
11/4-6 Junction Street, Auburn NSW 2144
Tel: 02 9475 2000 Web: www.danpal.com.au

Sheet Title:
COMPONENT DETAILS
Drawing Series:
DANPATHERM K7 SYSTEM STANDARD DETAILS

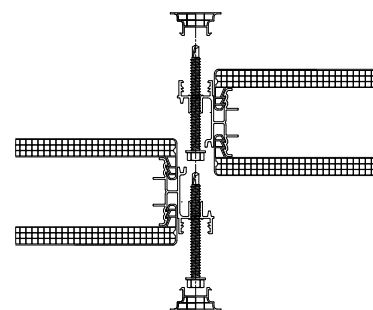
Drawn:
HL
Sheet Scale:
1:2 @ A3

Checked:
AN
Date:
12/11/2020

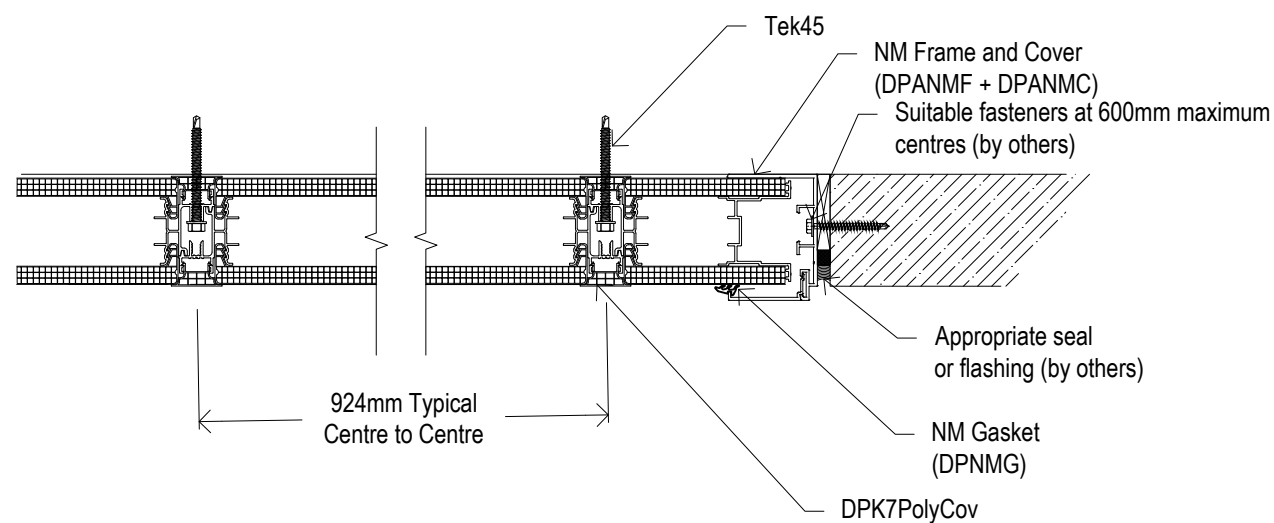
Revision:
A
Sheet:
2 of **4**



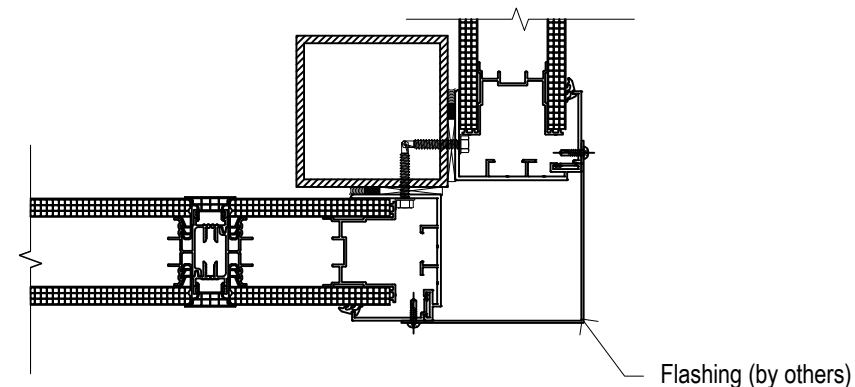
PLAN VIEW - FULL CASSETTE



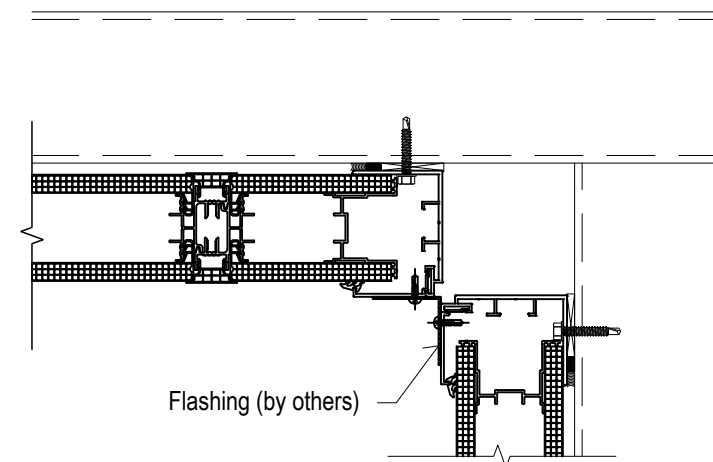
PLAN VIEW - JOINT ASSEMBLY



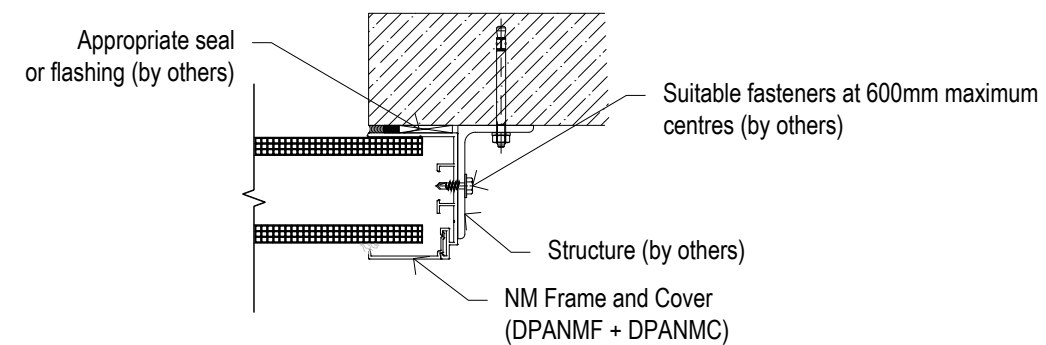
PLAN VIEW - TYPICAL ARRANGEMENT



PLAN VIEW - EXTERNAL CORNER



PLAN VIEW - INTERNAL CORNER



ALTERNATIVE - FACE MOUNT JAMB

