

EVERBRIGHT FACADE SYSTEM



GENERAL NOTES

DRAWING INFORMATION:

This drawing set is only applicable to the standard Everbright Facade System using Everbright panels and related accessories.

© Copyright 2020 Danpal Australia Pty Ltd.

FLASHINGS AND SEALANT:

Any flashings shown are indicative only. Suitable flashings should be designed and installed to ensure water runoff is adequately controlled and directed to suitable drainage provisions.

If required, only use neutral cure non-acetic silicone that is polycarbonate compatible.

Flashings and sealant are not supplied by Danpal.

SUB-STRUCTURE:

The sub-structure must be suitably designed by an engineer to withstand expected wind loads and should be designed to provide suitable support to the Danpal System, ensuring that Danpal maximum spans are not exceeded.

WARRANTY:

All Danpal materials are covered against defects by a 10 Year Commercial Limited Warranty. For further details or for project-specific warranty variations, please consult Danpal Australia.

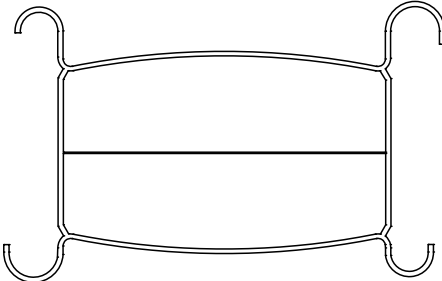



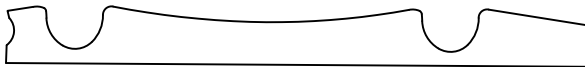


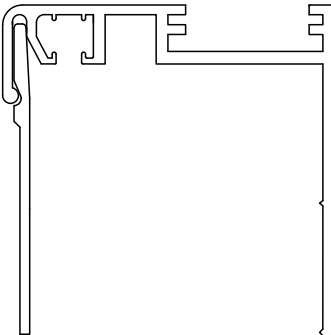
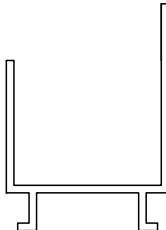


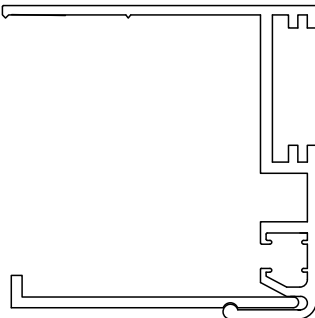

DANPAL® STANDARD DETAILS ARE INTENDED ONLY AS A GUIDE FOR PROJECT-SPECIFIC ENGINEERING DOCUMENTATION BY AN APPROPRIATELY QUALIFIED ENGINEER.

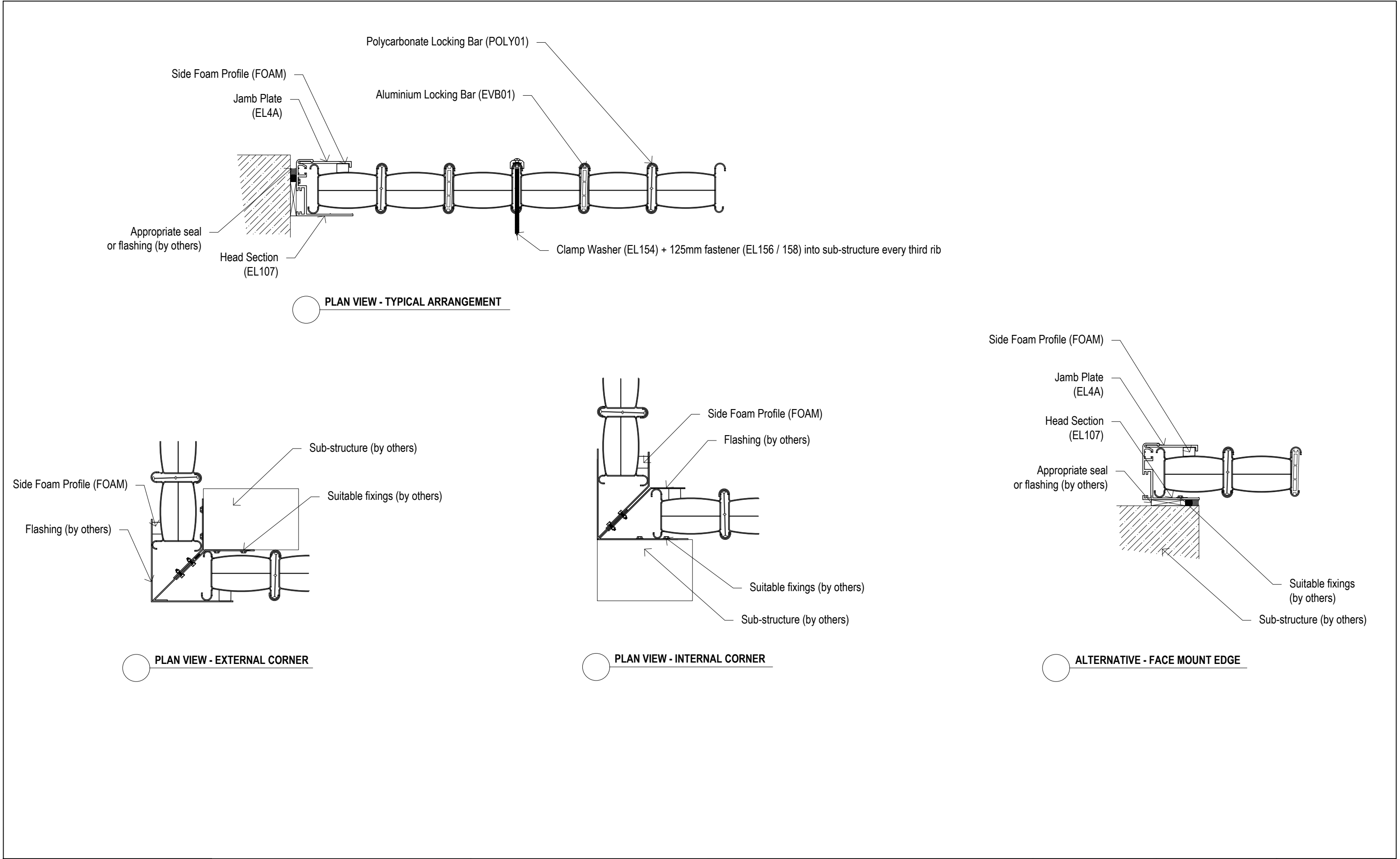


Dan Pal Australia Pty Ltd
ABN 85 124 859 212
11/4-6 Junction Street, Auburn NSW 2144
Tel: 02 9475 2000 Web: www.danpal.com.au

Sheet Title:
TITLE PAGE AND GENERAL NOTES
Drawing Series:
EVERBRIGHT FACADE STANDARD DETAILS

Drawn: HL	Checked: AN	Revision: A
Sheet Scale: NTS	Date: 12/11/2020	Sheet: 1 of 4

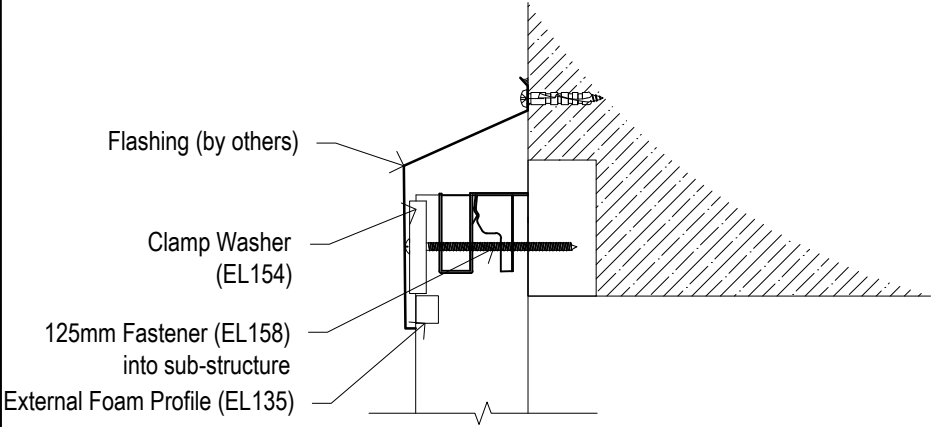
EVERBRIGHT COMPONENTS					
 <div>E610 - Polycarbonate Tube 11980mm maximum length 100mm width Weight: 0.762 gsm Stocked in Clear (65-10001), Opal (65-10004), Ice White (65-10005) and Blue (65-10006)</div>		 <div>Poly01 - Polycarbonate Locking Bar 11980mm maximum length Stocked in Clear (65-61001)</div>		 <div>EVB01 - Aluminium Locking Bar 11980mm maximum length Stocked in Mill Finish (65-690100)</div>	
 <div>EL135 - External Foam Profile 600mm length Stocked in White (65-690006)</div>	 <div>EL136 - Internal Foam Profile 600mm length Stocked in Black (65-690005)</div>	 <div>FOAM - Side Foam Profile 15mm x 20mm x 6000mm Stocked in Grey (65-690203)</div>	 <div>EL137 - End Lap Foam Profile 600mm length Stocked in Black (65-690010)</div>		
 <div>EL107 + EL107A - Head Section and Head Plate 6500mm length Stocked in Mill Finish Anodising and Powdercoating available to order (65-690106 and 65-690107)</div>	 <div>EL101 - Sill Section 6500mm length Stocked in Mill Finish Anodising and Powdercoating available to order (65-690109)</div>		 <div>EL154 - Clamp Washer Stocked in Mill Finish (65-690101)</div>  <div>EL156 / EL158 - Stainless Steel Fastener 125mm Self-Drilling screws suitable for Metal and Timber (specify substrate when ordering) (65-69003 or 65-69004)</div>		
 <div>EL107 + EL4A - Head Section and Jamb Plate 6500mm length Stocked in Mill Finish (65-690106 and 65-690108)</div>					
		Sheet Title: COMPONENT DETAILS		Drawn: HL	Checked: AN
Dan Pal Australia Pty Ltd ABN 85 124 859 212 11/4-6 Junction Street, Auburn NSW 2144 Tel: 02 9475 2000 Web: www.danpal.com.au		Drawing Series: EVERBRIGHT FACADE STANDARD DETAILS		Sheet Scale: 1:2 @ A3	Revision: A
				Date: 12/11/2020	Sheet: 2 of 4



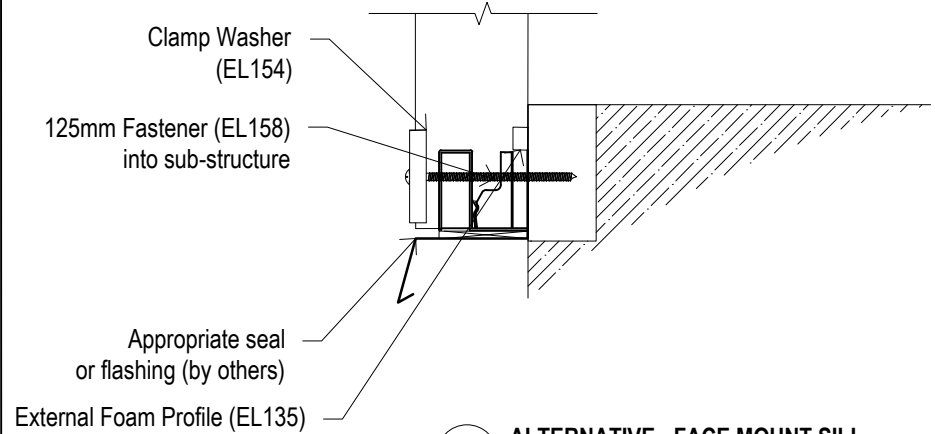
SPAN TABLE

Locking System	Locking Bar Type	Maximum Single Span
LS1	5 Polycarbonate Locking Bars per 6 Tubes	3400
LS2.1	1 Aluminium Locking Bar + 4 Polycarbonate Locking Bars per 6 Tubes	4000
LS2.2	2 Aluminium Locking Bars + 3 Polycarbonate Locking Bars per 6 Tubes	4500
LS2.5	5 Aluminium Locking Bars per 6 Tubes	5200

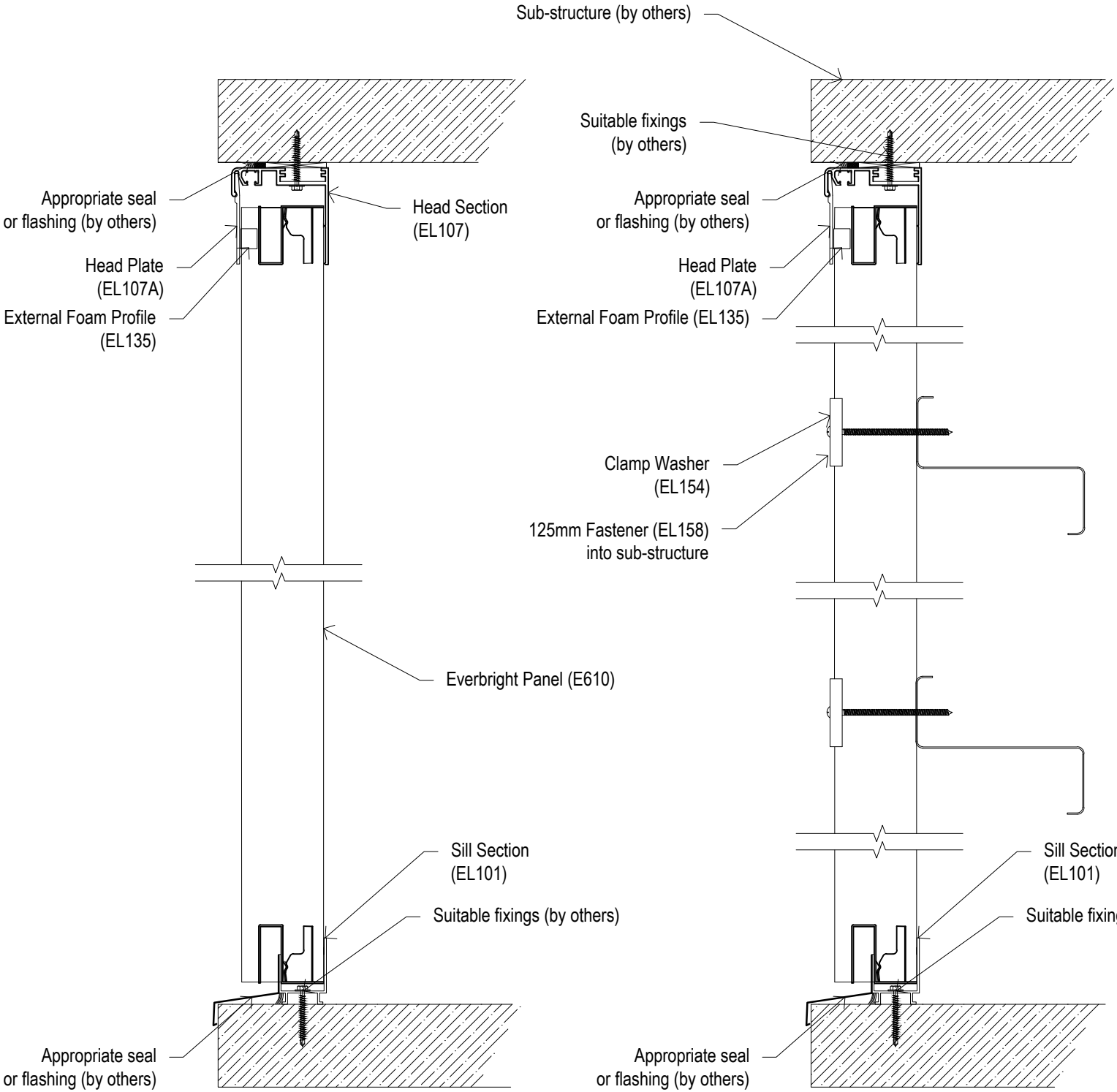
Above figures are in millimetres (mm).
Design load 1 kPA (ultimate) 0.7 kPA (serviceable). Deflection criteria: 50mm maximum.
Please consult Danpal Australia for any other situations and more information.



ALTERNATIVE - FACE MOUNT HEAD



ALTERNATIVE - FACE MOUNT SILL



TYPICAL SECTION - SINGLE SPAN

TYPICAL SECTION - MULTIPLE SPANS

MAXIMUM SPAN
(Refer Span Table)

MAXIMUM SPAN
(Refer Span Table)

MAXIMUM SPAN
(Refer Span Table)



Dan Pal Australia Pty Ltd
ABN 85 124 859 212
11/4-6 Junction Street, Auburn NSW 2144
Tel: 02 9475 2000 Web: www.danpal.com.au

Sheet Title:
CROSS SECTION DETAILS
Drawing Series:
EVERBRIGHT FACADE STANDARD DETAILS

Drawn:
HL
Sheet Scale:
1:5 @ A3

Checked:
AN
Date:
12/11/2020

Revision:
A
Sheet:
4 of **4**