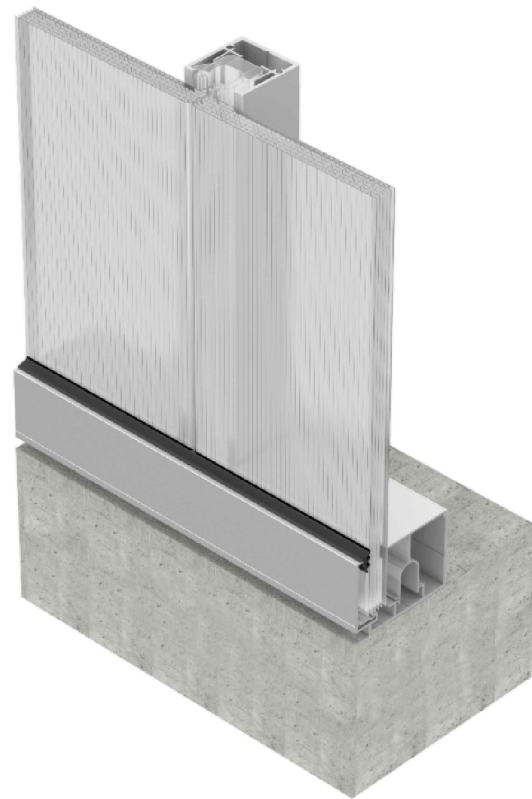


# DANPAL FRAMED FACADE SYSTEM

with DANPALON<sup>®</sup> Multicell Panels



## GENERAL NOTES

### DRAWING INFORMATION:

This drawing set and information contained within is applicable to the standard Danpal Framed Facade system using Danpalon panels and related accessories. © Copyright 2020 Danpal Australia Pty Ltd.

### FLASHINGS AND SEALANT:

Any flashings shown are indicative only. Suitable flashings should be designed and installed to ensure water runoff is adequately controlled and directed to suitable drainage provisions.

If required, only use neutral cure non-acetic silicone that is polycarbonate compatible.

Flashings and sealant are not supplied by Danpal.

### SUB-STRUCTURE:

The sub-structure must be suitably designed by an engineer to withstand expected wind loads and should be designed to provide suitable support to the Danpal System, ensuring that Danpal maximum spans are not exceeded.

### WARRANTY:

All Danpal materials are covered against defects by a 10 Year Commercial Limited Warranty. For further details or for project-specific warranty variations, please consult Danpal Australia.

**DANPAL<sup>®</sup> STANDARD COMPONENT DETAILS ARE INTENDED ONLY AS A GUIDE FOR PROJECT-SPECIFIC ENGINEERING DOCUMENTATION BY AN APPROPRIATELY QUALIFIED ENGINEER.**



Dan Pal Australia Pty Ltd  
ABN 85 124 859 212  
11/4-6 Junction Street, Auburn NSW 2144  
Tel: 02 9475 2000 Web: [www.danpal.com.au](http://www.danpal.com.au)

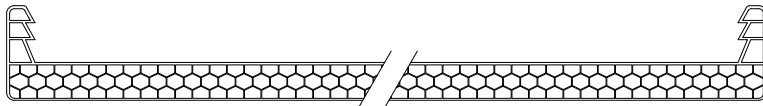
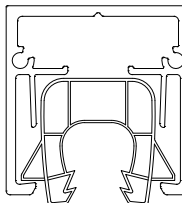
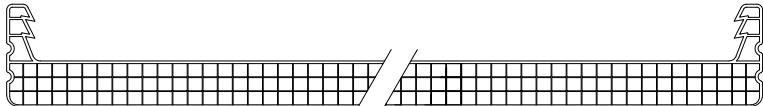
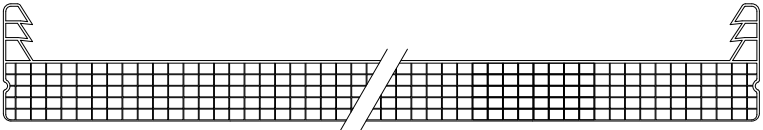
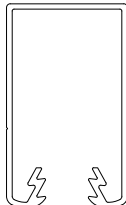

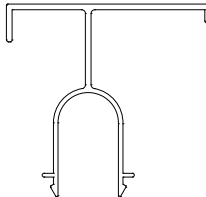

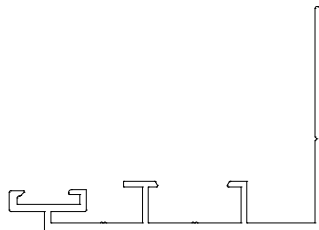
Sheet Title:  
**TITLE PAGE AND GENERAL NOTES**


Drawing Series:  
**DANPAL FRAMED FACADE SYSTEM STANDARD DETAILS**

Drawn:  
**HL**  
Sheet Scale:  
**NTS**

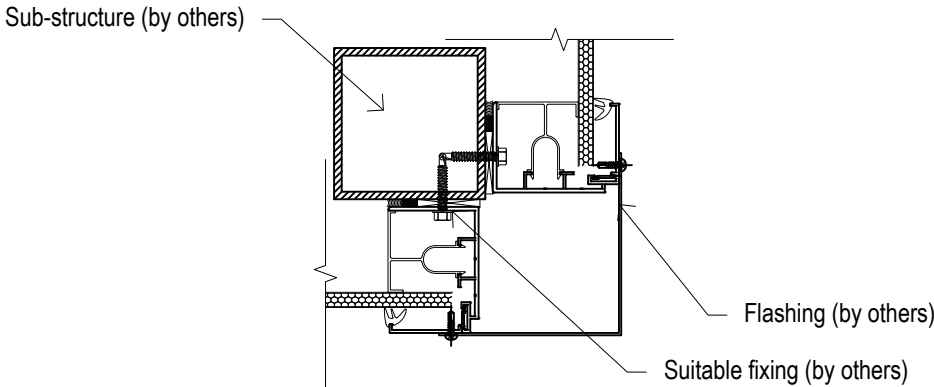
Checked:  
**AN**  
Date:  
**12/11/2020**

Revision:  
**A**  
Sheet:  
**1** of **4**

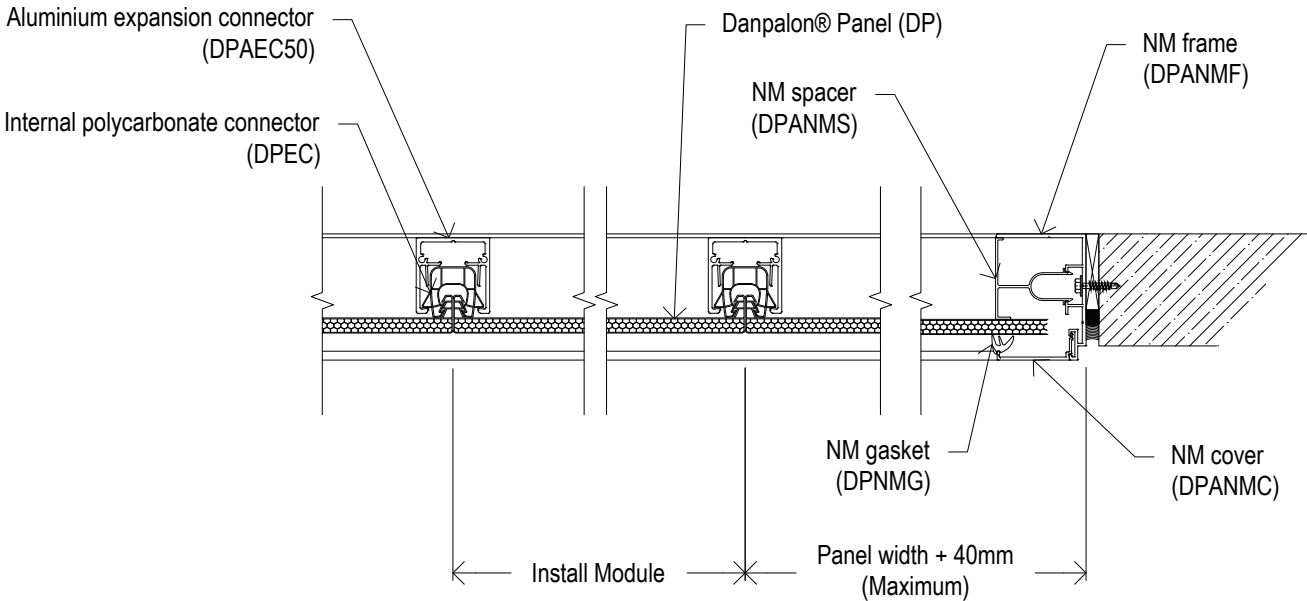
DANPALON® PANEL OPTIONS		CONNECTOR OPTIONS	
	<p><b>DP10 - 10mm Honeycomb</b> (600mm width) Weight: 2666gsm Stocked in all Reflective, Standard and Premium colours Other colours available to order</p>		<p><b>DPAEC50 - Aluminium 50mm Expansion Connector</b> Stocked in Mill Finish Anodising and Powdercoating available to order</p>
	<p><b>DP12 - 12mm Multicell</b> (900mm width) Weight: 2840gsm Stocked in Softlite Ice and Reflective Grey Other colours and 600mm width available to order</p>		
	<p><b>DP16 - 16mm Multicell</b> (600mm or 1040mm width) Weight: 3666gsm Stocked in Clear (1040mm only), Opal (1040mm only), Ice, Softlite Ice (1040mm only) and Reflective Grey Other colours and 900mm width available to order</p>		<p><b>DPAC54 - Aluminium Connector (54mm)</b> Stocked in Mill and Clear Anodised Finish Powdercoating available to order</p>
FRAME PROFILES AND ACCESSORIES			
	<p><b>DPANMC - NM Cover</b> Stocked in Mill Finish Anodising and Powdercoating available to order</p>		<p><b>DPANMS - NM Spacer</b> Stocked in Mill Finish Anodising and Powdercoating available to order</p>
	<p><b>DPNMG - NM Rubber Gasket</b> Stocked in Light Grey</p>		
			<p><b>DPANMJ - NM Joiner</b> Aluminium</p>
			<p><b>DPANMCJ - NM Corner Joiner</b> Aluminium</p>

	Dan Pal Australia Pty Ltd ABN 85 124 859 212 11/4-6 Junction Street, Auburn NSW 2144 Tel: 02 9475 2000 Web: www.danpal.com.au	Sheet Title:	Drawn:	Checked:	Revision:
		COMPONENT DETAILS	HL	AN	A
		Drawing Series:	Sheet Scale:	Date:	Sheet:
DANPAL FRAMED FACADE SYSTEM STANDARD DETAILS		1:2 @ A3	12/11/2020	2 of 4	

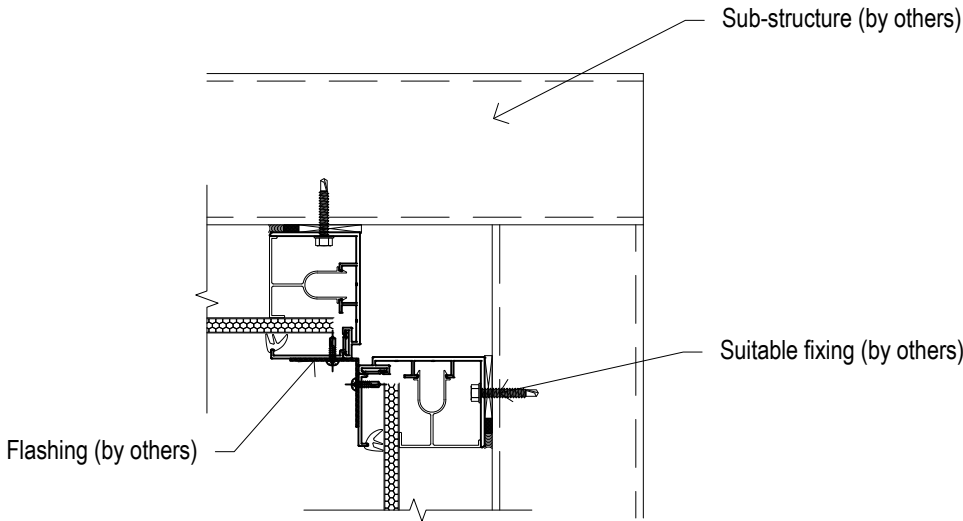
PANEL SET OUT		
Panel Thickness	Panel Width	Install Module
10mm	600mm	601mm
12mm	900mm	901mm
16mm	1040mm	1041mm



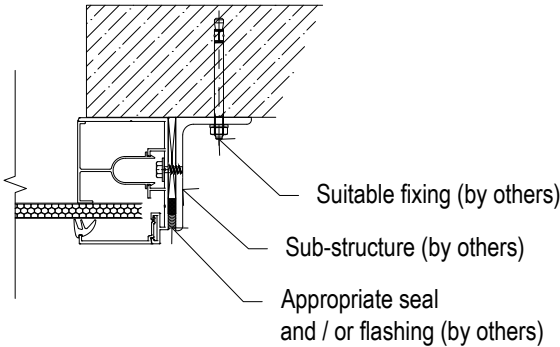
○ PLAN VIEW - EXTERNAL CORNER



○ PLAN VIEW - TYPICAL ARRANGEMENT



○ PLAN VIEW - INTERNAL CORNER

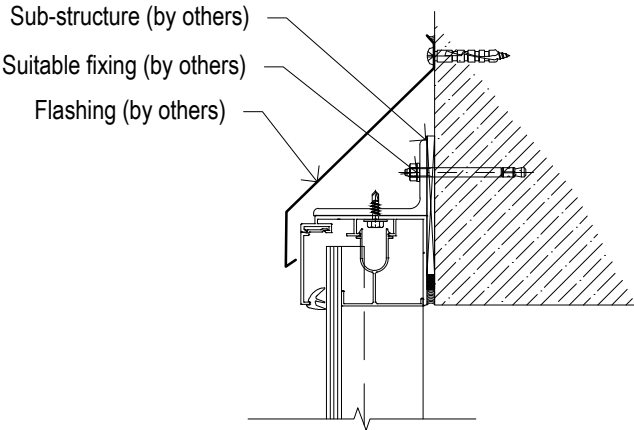


○ ALTERNATIVE - FACE MOUNT FRAME

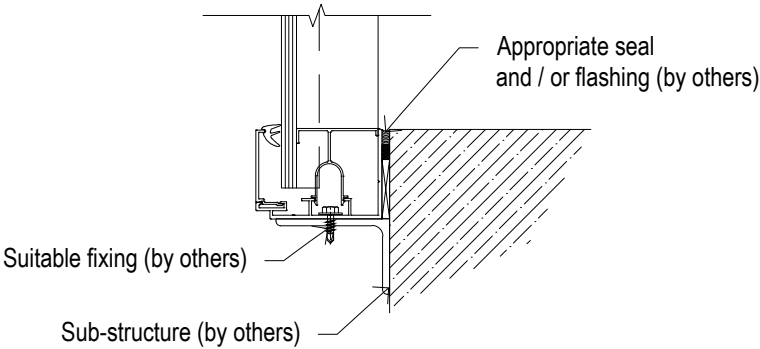


Dan Pal Australia Pty Ltd ABN 85 124 859 212 11/4-6 Junction Street, Auburn NSW 2144 Tel: 02 9475 2000 Web: www.danpal.com.au	Sheet Title: <b>PLAN VIEW SECTION DETAILS</b>	Drawn: <b>HL</b>	Checked: <b>AN</b>	Revision: <b>A</b>
	Drawing Series: <b>DANPAL FRAMED FACADE SYSTEM STANDARD DETAILS</b>	Sheet Scale: <b>1:5 @ A3</b>	Date: <b>12/11/2020</b>	Sheet: <b>3</b> of <b>4</b>

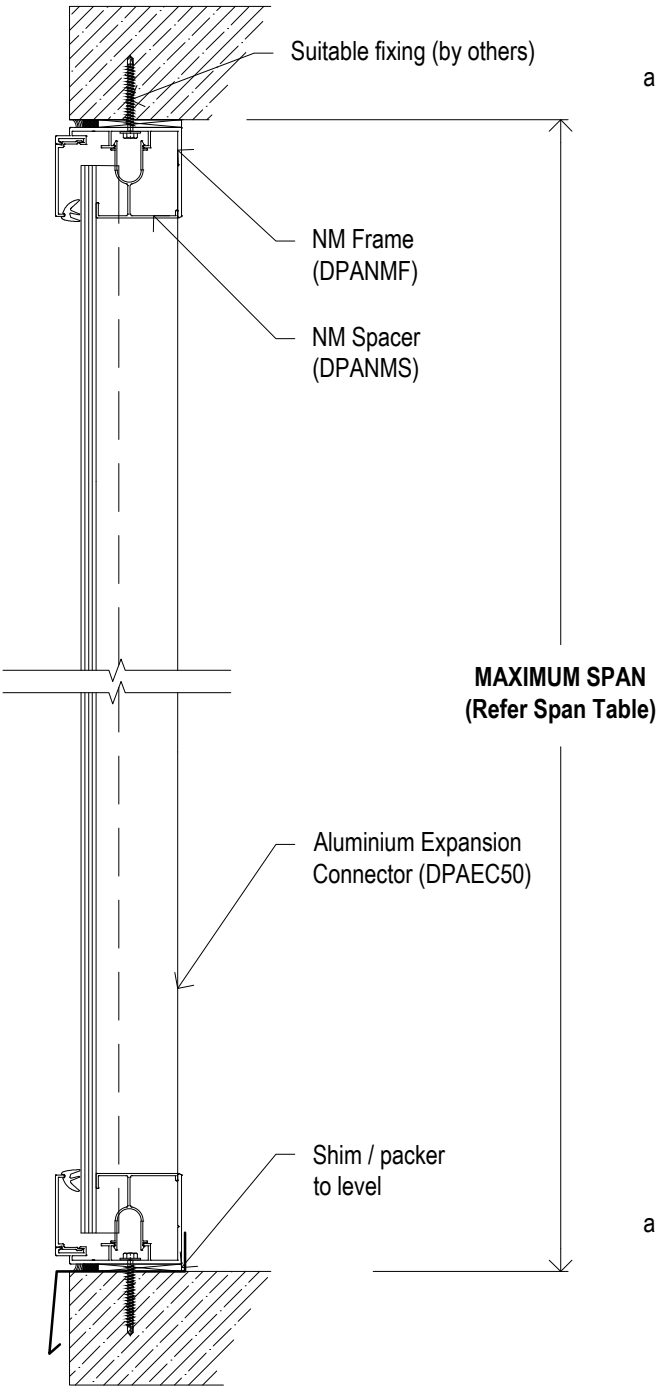
SPAN TABLE			
Connector	Danpalon® Panel		
	10mm	12mm	16mm
54mm (DPAC54)	2100	2000	1800
Expansion (DPAEC50)	3600	3250	3200
Above figures are in millimetres (mm). Design load 1 kPA (ultimate) 0.7 kPA (serviceable). Deflection criteria span / 50. Please consult Danpal Australia for any other situations and more information.			



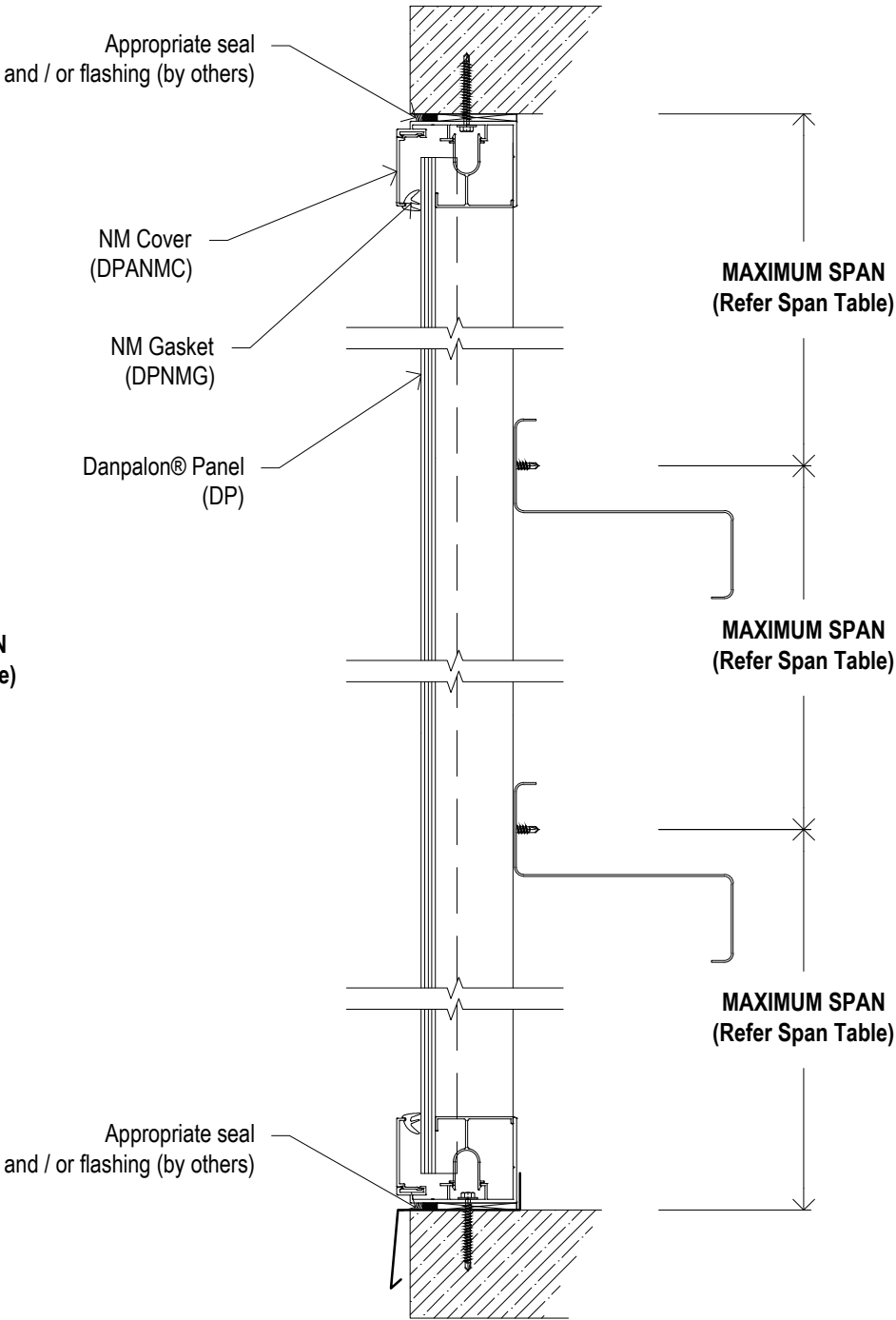
○ ALTERNATIVE - FACE MOUNT HEAD



○ ALTERNATIVE - FACE MOUNT SILL



○ SECTION - SINGLE SPAN



○ SECTION - MULTIPLE SPANS



Dan Pal Australia Pty Ltd  
ABN 85 124 859 212  
11/4-6 Junction Street, Auburn NSW 2144  
Tel: 02 9475 2000 Web: [www.danpal.com.au](http://www.danpal.com.au)

Sheet Title:  
**LONGITUDINAL SECTION DETAILS**

Drawing Series:  
**DANPAL FRAMED FACADE SYSTEM STANDARD DETAILS**

Drawn:  
**HL**

Sheet Scale:  
**1:5 @ A3**

Checked:  
**AN**

Date:  
**12/11/2020**

Revision:  
**A**

Sheet:  
**4** of **4**